

## Src (phospho Tyr416) antibody

**Cat. No. GTX24816**

<b>Host</b>	Rabbit
<b>Clonality</b>	Polyclonal
<b>Isotype</b>	IgG
<b>Applications</b>	WB, ICC/IF, IHC-P, IP, IHC
<b>Reactivity</b>	Human, Mouse, Rat, Yeast, Drosophila, Bovine, Dog, Chicken, Pig, Xenopus

References ( 6 )

Package

50 µl

## Applications

**Application Note**

\*Optimal dilutions/concentrations should be determined by the researcher.

Suggested dilution	Recommended dilution
WB	Assay dependent
ICC/IF	Assay dependent
IHC-P	1:10-1:100
IP	Assay dependent
IHC	Assay dependent

Not tested in other applications.

**Calculated MW** 60 kDa. ( [Note](#) )**Product Note** Based on sequence homology, this antibody may cross with other Src family members such as YES1 , FYN proteins when phosphorylated at the equivalent sites.

## Properties

<b>Form</b>	Liquid
<b>Buffer</b>	PBS, 0.1% BSA, 50% Glycerol
<b>Preservative</b>	0.05% Sodium azide
<b>Storage</b>	Store as concentrated solution. Centrifuge briefly prior to opening vial. For short-term storage (1-2 weeks), store at 4°C. For long-term storage, aliquot and store at -20°C or below. Avoid multiple freeze-thaw cycles.
<b>Concentration</b>	Batch dependent (Please refer to the vial label for the specific concentration.)
<b>Immunogen</b>	Synthetic peptide derived from the region of Src that contains tyrosine 416 (tyrosine 417 including the initiating methionine). The sequence is conserved in human, mouse, rat, chicken and frog. The Tyr418 of human Src is equivalent to Tyr416 of chicken Src.
<b>Purification</b>	Purified by antigen-affinity chromatography



For full product information, images and publications, please visit our [website](#).

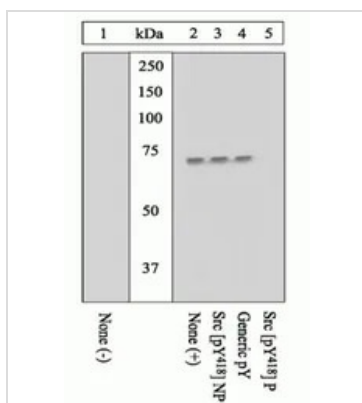
**Conjugation**

Unconjugated

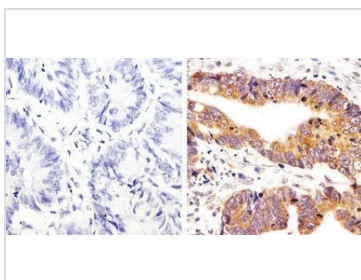
**Note**

For laboratory research use only. Not for any clinical, therapeutic, or diagnostic use in humans or animals. Not for animal or human consumption.

Purchasers shall not, and agree not to enable third parties to, analyze, copy, reverse engineer or otherwise attempt to determine the structure or sequence of the product.

**DATA IMAGES**

**GTX24816 WB Image**

WB analysis of samples using GTX24816 Src (phospho Tyr416) antibody. The data show that only the immunogen phosphopeptide blocks the signal, demonstrating the specificity of the antibody.


**GTX24816 IHC-P Image**

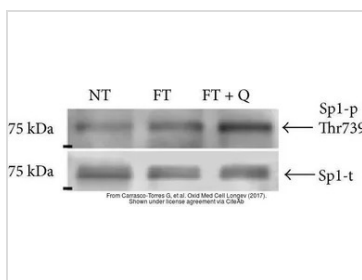
IHC-P analysis of human colon carcinoma tissue using GTX24816 Src (phospho Tyr416) antibody.

Right : Primary antibody

Left : Negative control without primary antibody

Antigen retrieval : 10mM sodium citrate (pH 6.0), microwaved for 8-15 min

Dilution : 1:20


**GTX24816 WB Image**

 The data was published in the 2017 in Oxid Med Cell Longev. [PMID: 28740570](https://pubmed.ncbi.nlm.nih.gov/28740570/)

 For full product information, images and publications, please visit our [website](https://www.genetex.com).