

PKR (phospho Thr451) antibody

Cat. No. GTX24818

| | |
|---------------------|--------------------------------|
| Host | Rabbit |
| Clonality | Polyclonal |
| Isotype | IgG |
| Applications | WB, IHC |
| Reactivity | Human, Mouse, Chicken, Primate |

Package
50 µl

Applications

Application Note

*Optimal dilutions/concentrations should be determined by the researcher.

| Suggested dilution | Recommended dilution |
|--------------------|----------------------|
| WB | 1:1000 |
| IHC | Assay dependent |

Not tested in other applications.

Calculated MW 62 kDa. ([Note](#))

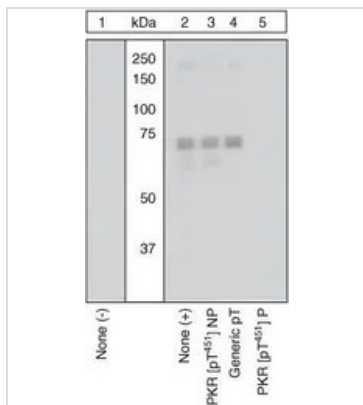
Properties

| | |
|----------------------|--|
| Form | Liquid |
| Buffer | PBS, 0.1% BSA, 50% Glycerol |
| Preservative | 0.05% Sodium azide |
| Storage | Store as concentrated solution. Centrifuge briefly prior to opening vial. For short-term storage (1-2 weeks), store at 4°C. For long-term storage, aliquot and store at -20°C or below. Avoid multiple freeze-thaw cycles. |
| Concentration | Batch dependent (Please refer to the vial label for the specific concentration.) |
| Immunogen | The antiserum was produced against a chemically synthesized phosphopeptide derived from the region of human PKR that contains threonine 451. |
| Purification | Purified by antigen-affinity chromatography |
| Conjugation | Unconjugated |
| Note | For laboratory research use only. Not for any clinical, therapeutic, or diagnostic use in humans or animals. Not for animal or human consumption. Purchasers shall not, and agree not to enable third parties to, analyze, copy, reverse engineer or otherwise attempt to determine the structure or sequence of the product. |



For full product information, images and publications, please visit our [website](#).

DATA IMAGES



GTX24818 WB Image

WB analysis of samples using GTX24818 PKR (phospho Thr451) antibody. The data show that only the immunogen phosphopeptide blocks the signal, demonstrating the specificity of the antibody.



For full product information, images and publications, please visit our [website](#).