

p38 MAPK (phospho Thr180/Tyr182) antibody

Cat. No. GTX24822

Host	Rabbit
Clonality	Polyclonal
Isotype	IgG
Applications	WB, ICC/IF, IHC-P, FCM
Reactivity	Human, Mouse, Rat

References (7)

Package

50 µl

Applications

Application Note

*Optimal dilutions/concentrations should be determined by the researcher.

Suggested dilution	Recommended dilution
WB	1:500-1:2000
ICC/IF	1 µg/ml
IHC-P	1:10-1:100
FCM	3-5 µg/10 ⁶ cells

Not tested in other applications.

Calculated MW	41 kDa. (Note)
Product Note	Reacts with p38 alpha, beta and gamma.

Properties

Form	Liquid
Buffer	PBS, 0.1% BSA, 50% Glycerol
Preservative	0.05% Sodium azide
Storage	Store as concentrated solution. Centrifuge briefly prior to opening vial. For short-term storage (1-2 weeks), store at 4°C. For long-term storage, aliquot and store at -20°C or below. Avoid multiple freeze-thaw cycles.
Concentration	Batch dependent (Please refer to the vial label for the specific concentration.)
Immunogen	The antiserum was produced against a chemically synthesized phosphopeptide derived from the region of human p38 that contains threonine 180 and tyrosine 182. This region is conserved among many species including mouse, rat, dog, monkey and carp.
Purification	Purified by antigen-affinity chromatography
Conjugation	Unconjugated



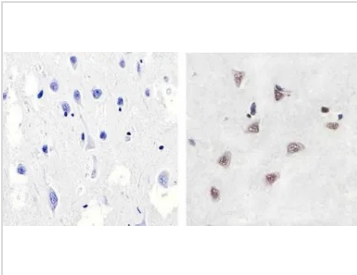
For full product information, images and publications, please visit our [website](#).

For laboratory research use only. Not for any clinical, therapeutic, or diagnostic use in humans or animals. Not for animal or human consumption.

Note

Purchasers shall not, and agree not to enable third parties to, analyze, copy, reverse engineer or otherwise attempt to determine the structure or sequence of the product.

DATA IMAGES



GTX24822 IHC-P Image

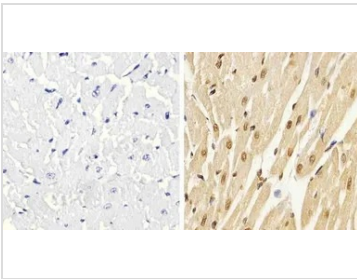
IHC-P analysis of human brain tissue using GTX24822 p38 MAPK (phospho Thr180/Tyr182) antibody.

Right : Primary antibody

Left : Negative control without primary antibody

Antigen retrieval : 10mM sodium citrate (pH 6.0), microwaved for 8-15 min

Dilution : 1:100



GTX24822 IHC-P Image

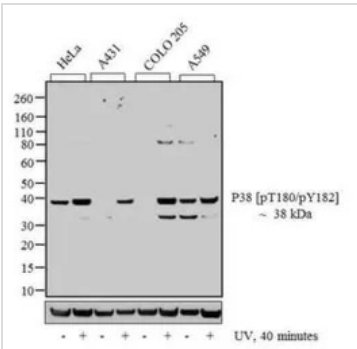
IHC-P analysis of rat heart tissue using GTX24822 p38 MAPK (phospho Thr180/Tyr182) antibody.

Right : Primary antibody

Left : Negative control without primary antibody

Antigen retrieval : 10mM sodium citrate (pH 6.0), microwaved for 8-15 min

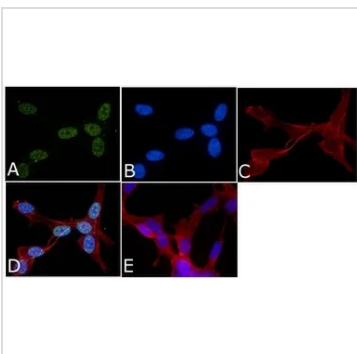
Dilution : 1:20



GTX24822 WB Image

WB analysis of 20 µg of HeLa (Lane 1) exposed for 40 minutes with UV (lane2), A431 (Lane 3) exposed for 40 minutes with UV (lane4), COLO 205 (Lane 5) exposed for 40 minutes with UV (Lane 6), A549 (Lane 7) exposed for 40 minutes with UV (Lane 8) cell lysate using GTX24822 p38 MAPK (phospho Thr180/Tyr182) antibody.

Dilution : 1:1000



GTX24822 ICC/IF Image

ICC/IF analysis of SH-SY5Y cells using GTX24822 p38 MAPK (phospho Thr180/Tyr182) antibody. Panel e is a no primary antibody control.

Green : Primary antibody

Blue : Nuclei

Red : Actin

Fixation : 4% paraformaldehyde

Permeabilization : 0.25% Triton X-100 for 10 minutes

Dilution : 1 µg/ml in 1% BSA incubated for 3 hours at room temperature



For full product information, images and publications, please visit our [website](https://www.genetex.com).