

PLCG1 (phospho Tyr783) antibody

Cat. No. GTX24828

Host	Rabbit
Clonality	Polyclonal
Isotype	IgG
Applications	WB, ICC/IF, IP, IHC
Reactivity	Human, Mouse

References (1)

Package

50 µl

Applications

Application Note

*Optimal dilutions/concentrations should be determined by the researcher.

Suggested dilution	Recommended dilution
WB	Assay dependent
ICC/IF	Assay dependent
IP	Assay dependent
IHC	Assay dependent

Not tested in other applications.

Calculated MW	149 kDa. (Note)
Product Note	Phosphorylation site-specific antibody selective for the phosphorylated form of the Phospholipase C gamma 1 containing a phosphate on tyrosine 783. The antibody has been shown to recognize the endogenous form of Phospholipase C gamma when phosphorylated on tyrosine 783 in a variety of cell types following treatment by a broad range of extracellular stimuli. Applications include NIH 3T3 cells +/- PDGF. The antibody does not react with a site directed mutant (Y783F).

Properties

Form	Liquid
Buffer	PBS, 0.1% BSA, 50% Glycerol
Preservative	0.05% Sodium azide
Storage	Store as concentrated solution. Centrifuge briefly prior to opening vial. For short-term storage (1-2 weeks), store at 4°C. For long-term storage, aliquot and store at -20°C or below. Avoid multiple freeze-thaw cycles.
Concentration	Batch dependent (Please refer to the vial label for the specific concentration.)
Immunogen	The antiserum was produced against a chemically synthesized phosphopeptide derived from the region of human PLC-gamma-1 that contains tyrosine 783. This region is conserved among many species including mouse, rat, cow and frog.
Purification	Purified by antigen-affinity chromatography
Conjugation	Unconjugated



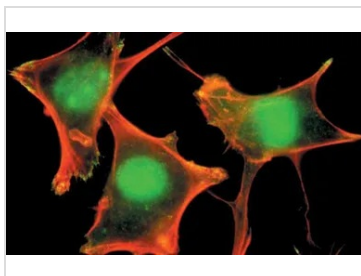
For full product information, images and publications, please visit our [website](#).

For laboratory research use only. Not for any clinical, therapeutic, or diagnostic use in humans or animals. Not for animal or human consumption.

Note

Purchasers shall not, and agree not to enable third parties to, analyze, copy, reverse engineer or otherwise attempt to determine the structure or sequence of the product.

DATA IMAGES



GTX24828 ICC/IF Image

ICC/IF analysis of fibroblasts using GTX24828 PLCG1 (phospho Tyr783) antibody.

Green : Primary antibody

Red : Actin



For full product information, images and publications, please visit our [website](#).