

## PLCG1 (phospho Tyr783) antibody

**Cat. No. GTX24828**

<b>Host</b>	Rabbit
<b>Clonality</b>	Polyclonal
<b>Isotype</b>	IgG
<b>Applications</b>	WB, ICC/IF, IP, IHC
<b>Reactivity</b>	Human, Mouse

References ( 1 )

Package

50 µl

## Applications

**Application Note**

\*Optimal dilutions/concentrations should be determined by the researcher.

Suggested dilution	Recommended dilution
WB	Assay dependent
ICC/IF	Assay dependent
IP	Assay dependent
IHC	Assay dependent

Not tested in other applications.

**Calculated MW** 149 kDa. ([Note](#))**Product Note**

Phosphorylation site-specific antibody selective for the phosphorylated form of the Phospholipase C gamma 1 containing a phosphate on tyrosine 783. The antibody has been shown to recognize the endogenous form of Phospholipase C gamma when phosphorylated on tyrosine 783 in a variety of cell types following treatment by a broad range of extracellular stimuli. Applications include NIH 3T3 cells +/- PDGF. The antibody does not react with a site directed mutant (Y783F).

## Properties

<b>Form</b>	Liquid
<b>Buffer</b>	PBS, 0.1% BSA, 50% Glycerol
<b>Preservative</b>	0.05% Sodium azide
<b>Storage</b>	Store as concentrated solution. Centrifuge briefly prior to opening vial. For short-term storage (1-2 weeks), store at 4°C. For long-term storage, aliquot and store at -20°C or below. Avoid multiple freeze-thaw cycles.
<b>Concentration</b>	Batch dependent (Please refer to the vial label for the specific concentration.)
<b>Immunogen</b>	The antiserum was produced against a chemically synthesized phosphopeptide derived from the region of human PLC-gamma-1 that contains tyrosine 783. This region is conserved among many species including mouse, rat, cow and frog.
<b>Purification</b>	Purified by antigen-affinity chromatography
<b>Conjugation</b>	Unconjugated

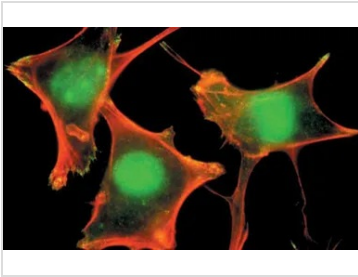


For full product information, images and publications, please visit our [website](#).

For laboratory research use only. Not for any clinical, therapeutic, or diagnostic use in humans or animals. Not for animal or human consumption.

**Note**  
Purchasers shall not, and agree not to enable third parties to, analyze, copy, reverse engineer or otherwise attempt to determine the structure or sequence of the product.

## DATA IMAGES

**GTX24828 ICC/IF Image**

ICC/IF analysis of fibroblasts using GTX24828 PLCG1 (phospho Tyr783) antibody.

Green : Primary antibody

Red : Actin



For full product information, images and publications, please visit our [website](#).