

PARP (cleaved) antibody (FITC)

Cat. No. GTX24831

Host	Rabbit
Clonality	Polyclonal
Isotype	IgG
Applications	WB, ICC/IF, FCM, IHC
Reactivity	Human, Mouse, Bovine

Package
500 µl

Applications

Application Note

*Optimal dilutions/concentrations should be determined by the researcher.

Suggested dilution	Recommended dilution
WB	Assay dependent
ICC/IF	Assay dependent
FCM	Assay dependent
IHC	Assay dependent

Not tested in other applications.

Calculated MW	113 kDa. (Note)
Product Note	This antibody specifically recognizes the 85 kDa fragment of cleaved PARP and can be used as a marker for detecting apoptotic cells.

Properties

Form	Liquid
Buffer	PBS, BSA
Preservative	0.1% Sodium azide
Storage	Store as concentrated solution. Centrifuge briefly prior to opening vial. For short-term storage (1-2 weeks), store at 4°C. For long-term storage, aliquot and store at -20°C or below. Avoid multiple freeze-thaw cycles. Protect from light.
Concentration	Batch dependent (Please refer to the vial label for the specific concentration.)
Immunogen	The antiserum was produced against a chemically synthesized peptide corresponding to N-terminus of cleavage site (214/215) of human PARP.
Purification	Purified by affinity chromatography
Conjugation	Fluorescein isothiocyanate (FITC) Wavelength



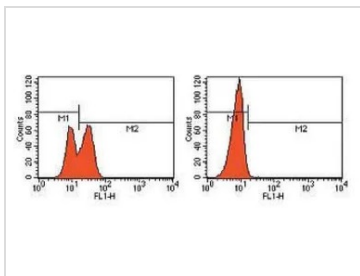
For full product information, images and publications, please visit our [website](#).

For laboratory research use only. Not for any clinical, therapeutic, or diagnostic use in humans or animals. Not for animal or human consumption.

Note

Purchasers shall not, and agree not to enable third parties to, analyze, copy, reverse engineer or otherwise attempt to determine the structure or sequence of the product.

DATA IMAGES



GTX24831 FCM Image

FACS analysis of permeabilized, fixed cells ($10 \mu\text{L}/10^6$) with apoptosis induction using GTX24831 PARP (cleaved) antibody (FITC). (left-hand figure)



For full product information, images and publications, please visit our [website](#).