

Paxillin (phospho Tyr31) antibody

Cat. No. GTX24832

Host	Rabbit
Clonality	Polyclonal
Isotype	IgG
Applications	WB, ICC/IF, IP, IHC
Reactivity	Human, Mouse, Rat

References (1)

Package

50 µl

Applications

Application Note

*Optimal dilutions/concentrations should be determined by the researcher.

Suggested dilution	Recommended dilution
WB	Assay dependent
ICC/IF	1:250
IP	Assay dependent
IHC	Assay dependent

Not tested in other applications.

Calculated MW 65 kDa. ([Note](#))

Properties

Form	Liquid
Buffer	PBS, 0.1% BSA, 50% Glycerol
Preservative	0.05% Sodium azide
Storage	Store as concentrated solution. Centrifuge briefly prior to opening vial. For short-term storage (1-2 weeks), store at 4°C. For long-term storage, aliquot and store at -20°C or below. Avoid multiple freeze-thaw cycles.
Concentration	Batch dependent (Please refer to the vial label for the specific concentration.)
Immunogen	The antiserum was produced against a chemically synthesized phosphopeptide derived from the region of human paxillin that contains tyrosine 31.
Purification	Purified by antigen-affinity chromatography
Conjugation	Unconjugated



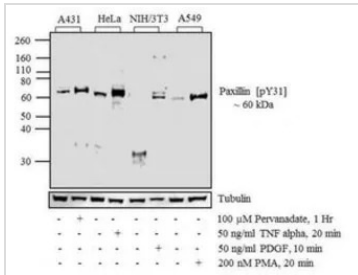
For full product information, images and publications, please visit our [website](#).

For laboratory research use only. Not for any clinical, therapeutic, or diagnostic use in humans or animals. Not for animal or human consumption.

Note

Purchasers shall not, and agree not to enable third parties to, analyze, copy, reverse engineer or otherwise attempt to determine the structure or sequence of the product.

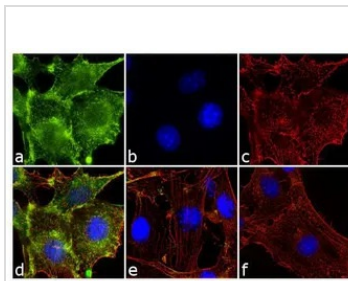
DATA IMAGES



GTX24832 WB Image

WB analysis of whole cell extracts (20 μg lysate) of A431 (Lane 1) treated for 1 hr with 100 μM of Pervanadate (Lane 2), HeLa (Lane 3) treated for 20 minutes with 50 ng/ml of TNF alpha (lane 4), NIH/3T3 (Lane 5) treated for 10 minutes with 50 ng/ml of PDGF (Lane 6), A549 (Lane 7) treated for 20 minutes with 200 nM of PMA (Lane 8) using GTX24832 Paxillin (phospho Tyr31) antibody.

Dilution : 1:500-1:2000



GTX24832 ICC/IF Image

ICC/IF analysis of 50ng PDGF treated (10 mins) NIH/3T3 cells using GTX24832 Paxillin (phospho Tyr31) antibody. Panel e is untreated cell with no signal. Panel f represents control cells with no primary antibody to assess background.

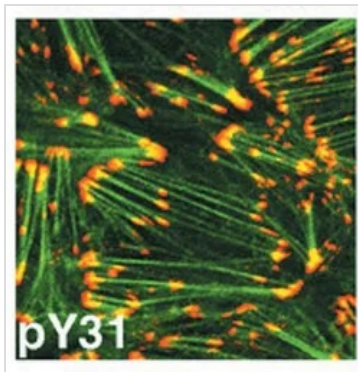
Green : Primary antibody

Blue : Nuclei

Red : Actin

Fixation : 4% paraformaldehyde

Permeabilization : 0.1% Triton X-100 for 10 minutes



GTX24832 ICC/IF Image

ICC/IF analysis of TGF-beta treated NMuMG cells using GTX24832 Paxillin (phospho Tyr31) antibody.

Green : Actin

Orange: paxillin (pY31)

Yellow: co-localization



For full product information, images and publications, please visit our [website](https://www.genetex.com).