

## Paxillin (phospho Tyr118) antibody

Cat. No. GTX24833

Host	Rabbit
Clonality	Polyclonal
Isotype	IgG
Applications	WB, ICC/IF, IHC-P, IP, IHC
Reactivity	Human, Mouse, Rat, Pig, Monkey, Xenopus

References ( 2 )

Package

50 µl

## Applications

## Application Note

\*Optimal dilutions/concentrations should be determined by the researcher.

Suggested dilution	Recommended dilution
WB	1:500
ICC/IF	Assay dependent
IHC-P	Assay dependent
IP	Assay dependent
IHC	Assay dependent

Not tested in other applications.

Calculated MW 65 kDa. ( [Note](#) )

## Properties

Form	Liquid
Buffer	PBS, 0.1% BSA, 50% Glycerol
Preservative	0.05% Sodium azide
Storage	Store as concentrated solution. Centrifuge briefly prior to opening vial. For short-term storage (1-2 weeks), store at 4°C. For long-term storage, aliquot and store at -20°C or below. Avoid multiple freeze-thaw cycles.
Concentration	Batch dependent (Please refer to the vial label for the specific concentration.)
Immunogen	The antiserum was produced against a chemically synthesized phosphopeptide derived from the region of human paxillin that contains tyrosine 118.
Purification	Purified by antigen-affinity chromatography
Conjugation	Unconjugated

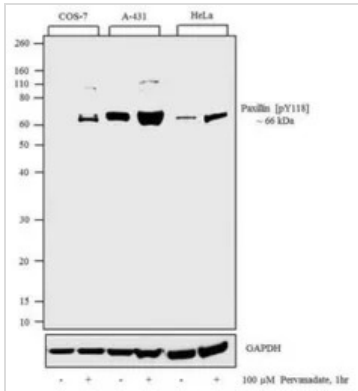
For full product information, images and publications, please visit our [website](#).

For laboratory research use only. Not for any clinical, therapeutic, or diagnostic use in humans or animals. Not for animal or human consumption.

#### Note

Purchasers shall not, and agree not to enable third parties to, analyze, copy, reverse engineer or otherwise attempt to determine the structure or sequence of the product.

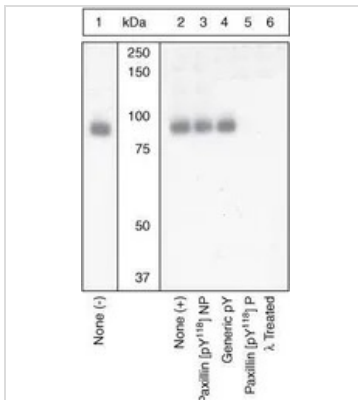
#### DATA IMAGES



#### GTx24833 WB Image

WB analysis of whole cell extracts (30 μg lysate) of COS-7 (Lane 1) treated with 100 μM Pervanadate for 1 hour (Lane 2), A431 (Lane 3) treated with 100 μM Pervanadate for 1 hour (Lane 4), HeLa (Lane 5) treated with 100 μM Pervanadate for 1 hour (Lane 6) using GTx24833 Paxillin (phospho Tyr118) antibody.

Dilution : 1:500



#### GTx24833 WB Image

WB analysis of samples using GTx24833 Paxillin (phospho Tyr118) antibody. The data show that only the immunogen phosphopeptide blocks the signal, demonstrating the specificity of the antibody. The membrane treated with phosphatase (Lane 6) eliminates the signal further verifying that the antibody is phospho-specific.



For full product information, images and publications, please visit our [website](https://www.genetex.com).