

Tau (phospho Thr212) antibody

Cat. No. GTX24842

Host	Rabbit
Clonality	Polyclonal
Isotype	IgG
Applications	WB, ICC/IF, IHC-P, FCM
Reactivity	Human, Mouse, Rat, Sheep, Bovine, Dog, Baboon, Primate

Package

50 µl

Applications

Application Note

*Optimal dilutions/concentrations should be determined by the researcher.

Suggested dilution	Recommended dilution
WB	1:500-1:2000
ICC/IF	1 µg/mL
IHC-P	Assay dependent
FCM	3-5 µg/million cells

Not tested in other applications.

Calculated MW 79 kDa. ([Note](#))

Properties

Form	Liquid
Buffer	PBS, 0.1% BSA, 50% Glycerol
Preservative	0.05% Sodium azide
Storage	Store as concentrated solution. Centrifuge briefly prior to opening vial. For short-term storage (1-2 weeks), store at 4°C. For long-term storage, aliquot and store at -20°C or below. Avoid multiple freeze-thaw cycles.
Concentration	Batch dependent (Please refer to the vial label for the specific concentration.)
Immunogen	The antiserum was produced against a chemically synthesized phosphopeptide derived from the region of human Tau that contains threonine 212. The sequence is conserved in many species including mouse, rat, rhesus monkey, baboon, cow and goat.
Purification	Purified by antigen-affinity chromatography
Conjugation	Unconjugated

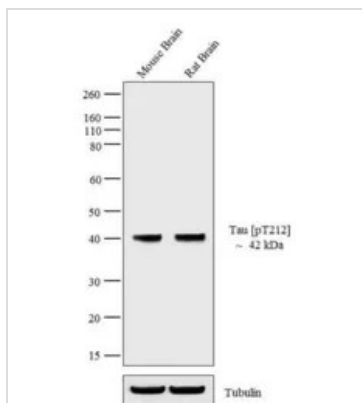


For full product information, images and publications, please visit our [website](#).

For laboratory research use only. Not for any clinical, therapeutic, or diagnostic use in humans or animals. Not for animal or human consumption.

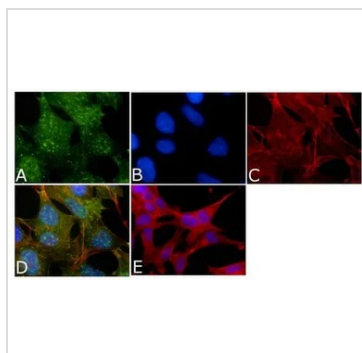
Note

Purchasers shall not, and agree not to enable third parties to, analyze, copy, reverse engineer or otherwise attempt to determine the structure or sequence of the product.

DATA IMAGES

GTX24842 WB Image

WB analysis of 20 µg of Mouse Brain (Lane 1) and Rat Brain (Lane 2) tissue lysate using GTX24842 Tau (phospho Thr212) antibody.

Dilution : 1:1000


GTX24842 ICC/IF Image

ICC/IF analysis of SH-SY5Y cells using GTX24842 Tau (phospho Thr212) antibody. Panel e is a no primary antibody control.

Green : Primary antibody

Blue : Nuclei

Red : Actin

Fixation : 4% paraformaldehyde

Permeabilization : 0.25% Triton X-100 for 10 minutes

Dilution : 1 µg/ml in 1% BSA incubated for 3 hours at room temperature



For full product information, images and publications, please visit our [website](https://www.genetex.com).