

Tau (phospho Ser214) antibody

Cat. No. GTX24846

Host	Rabbit
Clonality	Polyclonal
Isotype	IgG
Applications	WB, ICC/IF, IHC-P, FCM, IP, ELISA, IHC
Reactivity	Human, Mouse, Rat, Dog

Package
50 µl

Applications

Application Note

*Optimal dilutions/concentrations should be determined by the researcher.

Suggested dilution	Recommended dilution
WB	Assay dependent
ICC/IF	1 µg/mL
IHC-P	1:20-1:200
FCM	3-5 µg/million cells
IP	Assay dependent
ELISA	Assay dependent
IHC	Assay dependent

Not tested in other applications.

Calculated MW 79 kDa. ([Note](#))

Properties

Form	Liquid
Buffer	PBS, 0.1% BSA, 50% Glycerol
Preservative	0.05% Sodium azide
Storage	Store as concentrated solution. Centrifuge briefly prior to opening vial. For short-term storage (1-2 weeks), store at 4°C. For long-term storage, aliquot and store at -20°C or below. Avoid multiple freeze-thaw cycles.
Concentration	Batch dependent (Please refer to the vial label for the specific concentration.)
Immunogen	The antiserum was produced against a chemically synthesized phosphopeptide derived from the region of human Tau that contains serine 214. The sequence is conserved in many species including mouse, rat, rhesus monkey, baboon, cow and goat.
Purification	Purified by antigen-affinity chromatography



For full product information, images and publications, please visit our [website](#).

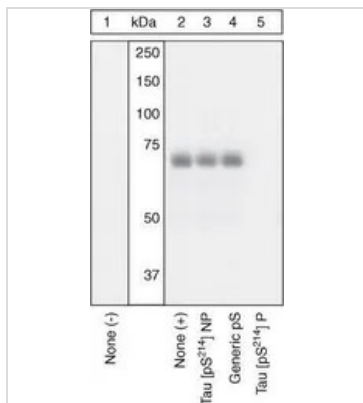
Conjugation Unconjugated

For laboratory research use only. Not for any clinical, therapeutic, or diagnostic use in humans or animals. Not for animal or human consumption.

Note

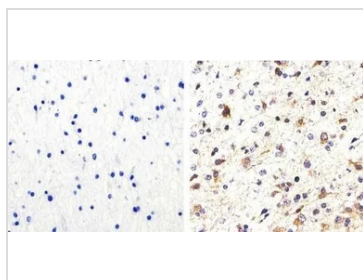
Purchasers shall not, and agree not to enable third parties to, analyze, copy, reverse engineer or otherwise attempt to determine the structure or sequence of the product.

DATA IMAGES



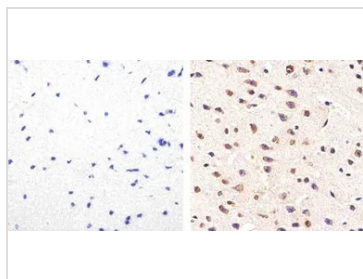
GTX24846 WB Image

WB analysis of samples using GTX24846 Tau (phospho Ser214) antibody. The data show that only the immunogen phosphopeptide blocks the signal, demonstrating the specificity of the antibody.



GTX24846 IHC-P Image

IHC-P analysis of human astroglioma tissue using GTX24846 Tau (phospho Ser214) antibody.
 Right : Primary antibody
 Left : Negative control without primary antibody
 Antigen retrieval : 10mM sodium citrate (pH 6.0), microwaved for 8-15 min
 Dilution : 1:100



GTX24846 IHC-P Image

IHC-P analysis of mouse brain tissue using GTX24846 Tau (phospho Ser214) antibody.
 Right : Primary antibody
 Left : Negative control without primary antibody
 Antigen retrieval : 10mM sodium citrate (pH 6.0), microwaved for 8-15 min
 Dilution : 1:100



For full product information, images and publications, please visit our [website](#).