

Tau (phospho Ser262) antibody

Cat. No. GTX24856

Host	Rabbit
Clonality	Polyclonal
Isotype	IgG
Applications	WB, IHC-P, FCM, ELISA, IHC, IHC (Free Floating)
Reactivity	Human, Mouse, Rat, Bovine, Dog

Package
50 µl

Applications

Application Note

*Optimal dilutions/concentrations should be determined by the researcher.

Suggested dilution	Recommended dilution
WB	1:500-1:2000
IHC-P	1:10-1:100
FCM	3-5 µg/million cells
ELISA	Assay dependent
IHC	Assay dependent
IHC (Free Floating)	Assay dependent

Not tested in other applications.

Calculated MW 79 kDa. ([Note](#))

Properties

Form	Liquid
Buffer	PBS, 0.1% BSA, 50% Glycerol
Preservative	0.05% Sodium azide
Storage	Store as concentrated solution. Centrifuge briefly prior to opening vial. For short-term storage (1-2 weeks), store at 4°C. For long-term storage, aliquot and store at -20°C or below. Avoid multiple freeze-thaw cycles.
Concentration	Batch dependent (Please refer to the vial label for the specific concentration.)
Immunogen	The antiserum was produced against a chemically synthesized phosphopeptide derived from the region of human Tau that contains serine 262.
Purification	Purified by antigen-affinity chromatography
Conjugation	Unconjugated



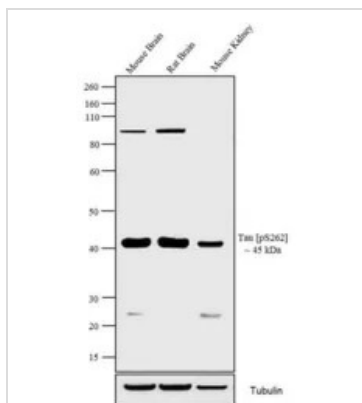
For full product information, images and publications, please visit our [website](#).

For laboratory research use only. Not for any clinical, therapeutic, or diagnostic use in humans or animals. Not for animal or human consumption.

Note

Purchasers shall not, and agree not to enable third parties to, analyze, copy, reverse engineer or otherwise attempt to determine the structure or sequence of the product.

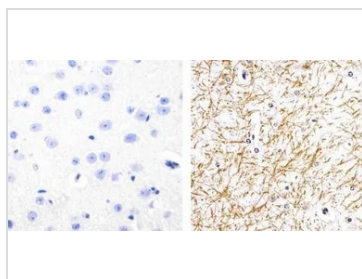
DATA IMAGES



GTX24856 WB Image

WB analysis of 20 µg of Mouse Brain (Lane 1), Rat Brain (Lane 2) and Mouse Kidney (Lane 3) tissue lysate using GTX24856 Tau (phospho Ser262) antibody.

Dilution : 1:1000



GTX24856 IHC-P Image

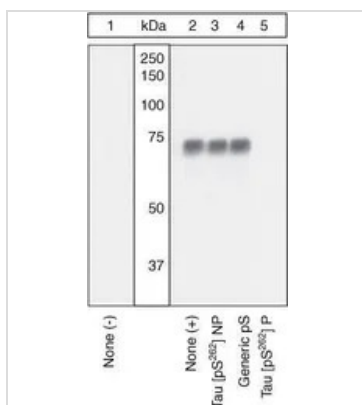
IHC-P analysis of mouse brain tissue using GTX24856 Tau (phospho Ser262) antibody.

Right : Primary antibody

Left : Negative control without primary antibody

Antigen retrieval : 10mM sodium citrate (pH 6.0), microwaved for 8-15 min

Dilution : 1:20



GTX24856 WB Image

WB analysis of samples using GTX24856 Tau (phospho Ser262) antibody. The data show that only the immunogen phosphopeptide blocks the signal, demonstrating the specificity of the antibody.



For full product information, images and publications, please visit our [website](#).