

## Tau (phospho Ser396) antibody

**Cat. No. GTX24858**

<b>Host</b>	Rabbit
<b>Clonality</b>	Polyclonal
<b>Isotype</b>	IgG
<b>Applications</b>	WB, ICC/IF, IHC-P, IHC-Fr, ELISA, Neutralizing /Inhibition, IHC (Free Floating)
<b>Reactivity</b>	Human, Mouse, Rat, Bovine

References ( 4 )

Package

50 µl

## Applications

**Application Note**

\*Optimal dilutions/concentrations should be determined by the researcher.

Suggested dilution	Recommended dilution
WB	1:1000
ICC/IF	Assay dependent
IHC-P	Assay dependent
IHC-Fr	Assay dependent
ELISA	Assay dependent
Neutralizing /Inhibition	Assay dependent
IHC (Free Floating)	Assay dependent

Not tested in other applications.

**Calculated MW** 79 kDa. ( [Note](#) )

## Properties

<b>Form</b>	Liquid
<b>Buffer</b>	PBS, 0.1% BSA, 50% Glycerol
<b>Preservative</b>	0.05% Sodium azide
<b>Storage</b>	Store as concentrated solution. Centrifuge briefly prior to opening vial. For short-term storage (1-2 weeks), store at 4°C. For long-term storage, aliquot and store at -20°C or below. Avoid multiple freeze-thaw cycles.
<b>Concentration</b>	Batch dependent (Please refer to the vial label for the specific concentration.)
<b>Immunogen</b>	The antiserum was produced against a chemically synthesized phosphopeptide derived from the region of human Tau that contains serine 396. The sequence is conserved in many species including mouse, rat, rhesus monkey, baboon, cow and goat.
<b>Purification</b>	Purified by antigen-affinity chromatography



For full product information, images and publications, please visit our [website](#).

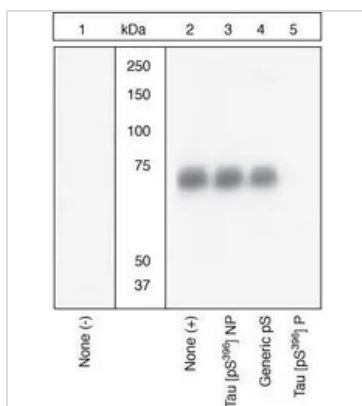
**Conjugation** Unconjugated

For laboratory research use only. Not for any clinical, therapeutic, or diagnostic use in humans or animals. Not for animal or human consumption.

**Note**

Purchasers shall not, and agree not to enable third parties to, analyze, copy, reverse engineer or otherwise attempt to determine the structure or sequence of the product.

DATA IMAGES



**GTX24858 WB Image**

WB (peptide competition) analysis of human recombinant Tau treated with GSK-3 beta (1 µg per µg Tau) for 45 minutes (Lane 2-5) using GTX24858 Tau (phospho Ser396) antibody. The data shows that only the immunogen phospho peptide blocks the signal, demonstrating the specificity of the antibody.

The primary antibody was prior incubated with peptide as following :

- Lane 1 : No peptide (Non-treated))
- Lane 2 : No peptide (GSK-3 beta treated)
- Lane 3: The non-phospho peptide corresponding to immunogen
- Lane 4: A generic phosphoserine-containing peptide
- Lane 5: The phospho peptide immunogen



For full product information, images and publications, please visit our [website](#).