

Tau (phospho Ser409) antibody

Cat. No. GTX24861

Host	Rabbit
Clonality	Polyclonal
Isotype	IgG
Applications	WB, IHC-P, ELISA
Reactivity	Human, Mouse, Rat

Package
50 µl

Applications

Application Note

*Optimal dilutions/concentrations should be determined by the researcher.

Suggested dilution	Recommended dilution
WB	Assay dependent
IHC-P	1:10-1:100
ELISA	Assay dependent

Not tested in other applications.

Calculated MW 79 kDa. ([Note](#))

Properties

Form	Liquid
Buffer	PBS, 0.1% BSA, 50% Glycerol
Preservative	0.05% Sodium azide
Storage	Store as concentrated solution. Centrifuge briefly prior to opening vial. For short-term storage (1-2 weeks), store at 4°C. For long-term storage, aliquot and store at -20°C or below. Avoid multiple freeze-thaw cycles.
Concentration	Batch dependent (Please refer to the vial label for the specific concentration.)
Immunogen	The antiserum was produced against a chemically synthesized phosphopeptide derived from a region of human Tau that contains serine 409. The sequence is conserved in mouse and rat.
Purification	Purified by antigen-affinity chromatography
Conjugation	Unconjugated

Note

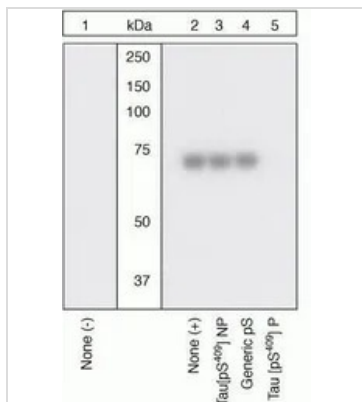
For laboratory research use only. Not for any clinical, therapeutic, or diagnostic use in humans or animals. Not for animal or human consumption.

Purchasers shall not, and agree not to enable third parties to, analyze, copy, reverse engineer or otherwise attempt to determine the structure or sequence of the product.



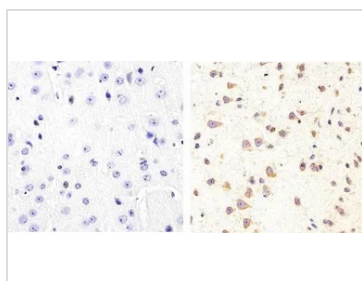
For full product information, images and publications, please visit our [website](#).

DATA IMAGES



GTX24861 WB Image

WB (peptide competition) analysis of human recombinant Tau treated with PKA (36 µg per µg Tau) for 1 hour (Lanes 2-5) using GTX24861 Tau (phospho Ser409) antibody prior incubated with the non-phosphopeptide corresponding to the phosphopeptide immunogen (Lane 3), a generic phosphoserine-containing peptide (Lane 4), or the phosphopeptide immunogen (Lane 5) control. The data show that only the immunogen phosphopeptide blocks the signal, demonstrating the specificity of the antibody.



GTX24861 IHC-P Image

IHC-P analysis of mouse brain tissue using GTX24861 Tau (phospho Ser409) antibody.

Right : Primary antibody

Left : Negative control without primary antibody

Antigen retrieval : 10mM sodium citrate (pH 6.0), microwaved for 8-15 min

Dilution : 1:20



For full product information, images and publications, please visit our [website](#).