

# FOXC2 antibody, C-term

**Cat. No. GTX25060**

<b>Host</b>	Goat
<b>Clonality</b>	Polyclonal
<b>Isotype</b>	IgG
<b>Applications</b>	WB, IHC-P, FCM
<b>Reactivity</b>	Human

**Package**  
100 µg

## Applications

### Application Note

\*Optimal dilutions/concentrations should be determined by the researcher.

Suggested dilution	Recommended dilution
WB	0.1-0.5µg/ml
IHC-P	2-4µg/ml
FCM	10µg/ml

**Note : Human Breast Cancer shows nuclear staining with some weak cytoplasm staining.**

Not tested in other applications.

**Calculated MW** 54 kDa. ( [Note](#) )

## Properties

<b>Form</b>	Liquid
<b>Buffer</b>	TBS, 0.5% BSA
<b>Preservative</b>	0.02% Sodium azide
<b>Storage</b>	Store as concentrated solution. Centrifuge briefly prior to opening vial. For short-term storage (1-2 weeks), store at 4°C. For long-term storage, aliquot and store at -20°C or below. Avoid multiple freeze-thaw cycles.
<b>Concentration</b>	0.50 mg/ml (Please refer to the vial label for the specific concentration.)
<b>Immunogen</b>	Peptide with sequence RHAAPYSYDCTKY, from the C Terminus of the protein sequence according to NP_005242.1.
<b>Purification</b>	Purified by ammonium sulphate precipitation followed by antigen affinity chromatography
<b>Conjugation</b>	Unconjugated

### Note

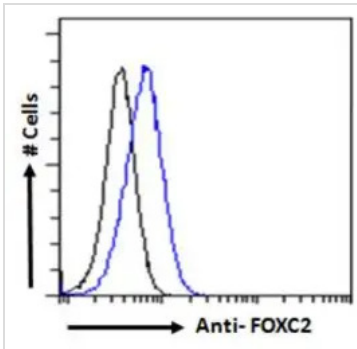
For laboratory research use only. Not for any clinical, therapeutic, or diagnostic use in humans or animals. Not for animal or human consumption.

Purchasers shall not, and agree not to enable third parties to, analyze, copy, reverse engineer or otherwise attempt to determine the structure or sequence of the product.



For full product information, images and publications, please visit our [website](#).

## DATA IMAGES



### GTx25060 FCM Image

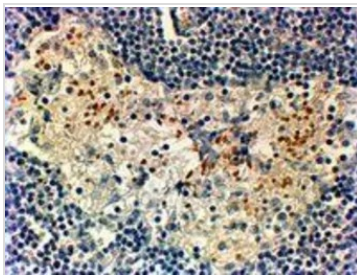
FACS analysis of PFA fixed HEK293 cells using GTx25060 FOXC2 antibody, C-term.

Blue : Primary antibody

Black : Isotype control

Permeabilization : 0.5% Triton

Dilution : 1µg/ml

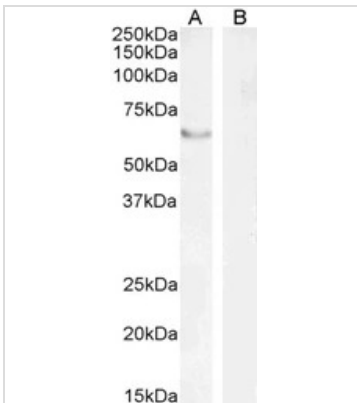


### GTx25060 IHC-P Image

IHC-P analysis of human breast cancer using GTx25060 FOXC2 antibody, C-term.

Antigen retrieval : Tris/EDTA buffer Ph 9

Dilution : 2µg/ml



### GTx25060 WB Image

WB analysis of nuclear HEK293 (A) and negative control human Pancreas (B) lysate (RIPA buffer, 35µg total protein per lane) using GTx25060 FOXC2 antibody, C-term.

Dilution : 2µg/ml (nuclear HEK293) and 1µg/ml (human pancreas)



For full product information, images and publications, please visit our [website](https://www.genetex.com).