

FOXC1 antibody, C-term

Cat. No. GTX25079

Host	Goat
Clonality	Polyclonal
Isotype	IgG
Applications	WB, IHC-P, FCM
Reactivity	Human

References (1)

Package

100 µg

Applications

Application Note

*Optimal dilutions/concentrations should be determined by the researcher.

Suggested dilution	Recommended dilution
WB	0.3-1µg/ml
IHC-P	Assay dependent
FCM	10µg/ml

Not tested in other applications.

Calculated MW 57 kDa. ([Note](#))

Properties

Form	Liquid
Buffer	TBS, 0.5% BSA
Preservative	0.02% Sodium azide
Storage	Store as concentrated solution. Centrifuge briefly prior to opening vial. For short-term storage (1-2 weeks), store at 4°C. For long-term storage, aliquot and store at -20°C or below. Avoid multiple freeze-thaw cycles.
Concentration	0.50 mg/ml (Please refer to the vial label for the specific concentration.)
Immunogen	Peptide with sequence RTSGAFVYDCSKF, from the C Terminus of the protein sequence according to NP_001444.2.
Purification	Purified by ammonium sulphate precipitation followed by antigen affinity chromatography
Conjugation	Unconjugated

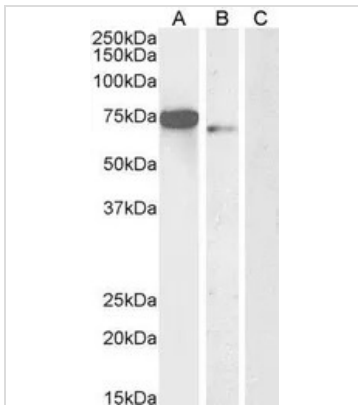
Note

For laboratory research use only. Not for any clinical, therapeutic, or diagnostic use in humans or animals. Not for animal or human consumption.

Purchasers shall not, and agree not to enable third parties to, analyze, copy, reverse engineer or otherwise attempt to determine the structure or sequence of the product.

For full product information, images and publications, please visit our [website](#).

DATA IMAGES



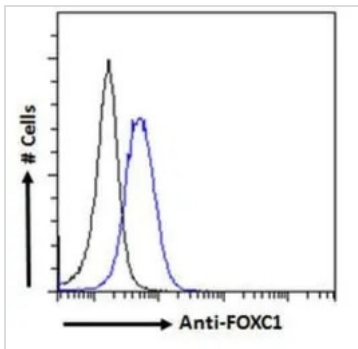
GTX25079 WB Image

WB analysis of HEK293 (A) MCF7 nuclear (B) and Negative control Daudi (C) cell lysate using GTX25079

FOXC1 antibody, C-term.

Dilution : 0.3µg/ml

Loading : 35µg protein in RIPA buffer



GTX25079 FCM Image

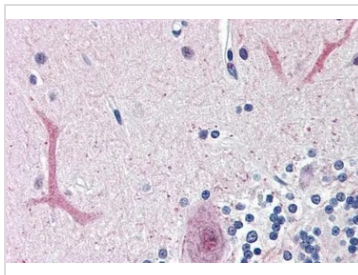
FACS analysis of PFA fixed HEK293 cells using GTX25079 FOXC1 antibody, C-term.

Blue : Primary antibody

Black : Isotype control

Permeabilization : 0.5% Triton

Dilution : 10µg/ml

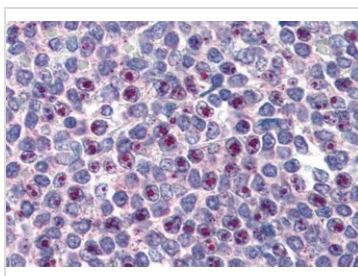


GTX25079 IHC-P Image

IHC-P analysis of human cerebellum using GTX25079 FOXC1 antibody, C-term.

Antigen retrieval : citrate buffer pH 6

Dilution : 3.75µg/ml



GTX25079 IHC-P Image

IHC-P analysis of human spleen using GTX25079 FOXC1 antibody, C-term.

Antigen retrieval : citrate buffer pH 6

Dilution : 3.75µg/ml



For full product information, images and publications, please visit our [website](https://www.genetex.com).