

FOXE1 antibody, C-term

Cat. No. GTX25080

Host	Goat
Clonality	Polyclonal
Isotype	IgG
Applications	IHC-P
Reactivity	Human

Package
100 µg

Applications

Application Note

*Optimal dilutions/concentrations should be determined by the researcher.

Suggested dilution	Recommended dilution
IHC-P	5µg/ml

Note : Human Thyroid Gland shows nuclear staining in thyrocytes.

Not tested in other applications.

Properties

Form	Liquid
Buffer	TBS, 0.5% BSA
Preservative	0.02% Sodium azide
Storage	Store as concentrated solution. Centrifuge briefly prior to opening vial. For short-term storage (1-2 weeks), store at 4°C. For long-term storage, aliquot and store at -20°C or below. Avoid multiple freeze-thaw cycles.
Concentration	0.50 mg/ml (Please refer to the vial label for the specific concentration.)
Immunogen	Peptide with sequence C-AYPGGIDRFVSAM, from the C Terminus of the protein sequence according to NP_004464.2.
Purification	Purified by ammonium sulphate precipitation followed by antigen affinity chromatography
Conjugation	Unconjugated

Note

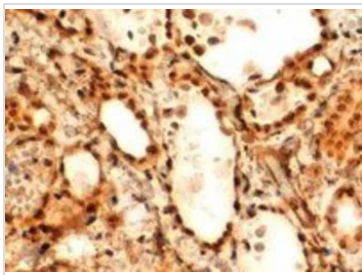
For laboratory research use only. Not for any clinical, therapeutic, or diagnostic use in humans or animals. Not for animal or human consumption.

Purchasers shall not, and agree not to enable third parties to, analyze, copy, reverse engineer or otherwise attempt to determine the structure or sequence of the product.



For full product information, images and publications, please visit our [website](#).

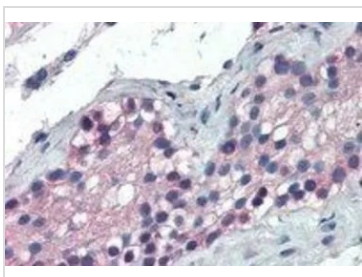
DATA IMAGES


GTx25080 IHC-P Image

IHC-P analysis of human thyroid Gland using GTx25080 FOXE1 antibody, C-term.

Antigen retrieval : Tris/EDTA buffer pH 9

Dilution : 2µg/ml


GTx25080 IHC-P Image

IHC-P analysis of human testis using GTx25080 FOXE1 antibody, C-term.

Antigen retrieval : Tris/EDTA buffer pH 9

Dilution : 5µg/ml



For full product information, images and publications, please visit our [website](#).