

Integrin beta 3 (phospho Tyr773) antibody

Cat. No. GTX25190

Host	Rabbit
Clonality	Polyclonal
Isotype	IgG
Applications	WB, ICC/IF, FCM, IP
Reactivity	Human, Cat

Package
50 µl

Applications

Application Note

*Optimal dilutions/concentrations should be determined by the researcher.

Suggested dilution	Recommended dilution
WB	Assay dependent
ICC/IF	1:250
FCM	1:20
IP	Assay dependent

Not tested in other applications.

Calculated MW 87 kDa. ([Note](#))

Properties

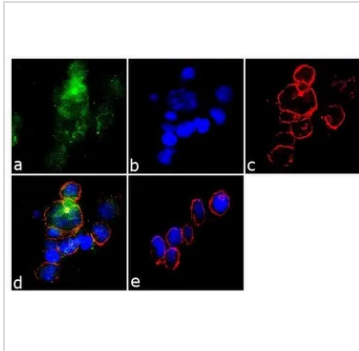
Form	Liquid
Buffer	PBS, 0.1% BSA, 50% Glycerol
Preservative	0.05% Sodium azide
Storage	Store as concentrated solution. Centrifuge briefly prior to opening vial. For short-term storage (1-2 weeks), store at 4°C. For long-term storage, aliquot and store at -20°C or below. Avoid multiple freeze-thaw cycles.
Concentration	Batch dependent (Please refer to the vial label for the specific concentration.)
Immunogen	The antiserum was produced against a chemically synthesized phosphopeptide derived from the region of human Integrin b3 receptor that contains tyrosine 773 (based on Swiss Protein database, accession number P05106). The sequence is conserved in human, mouse and rat.
Purification	Purified by antigen-affinity chromatography
Conjugation	Unconjugated



For full product information, images and publications, please visit our [website](#).

For laboratory research use only. Not for any clinical, therapeutic, or diagnostic use in humans or animals. Not for animal or human consumption.

Note
 Purchasers shall not, and agree not to enable third parties to, analyze, copy, reverse engineer or otherwise attempt to determine the structure or sequence of the product.

DATA IMAGES

GTX25190 ICC/IF Image

ICC/IF analysis of THP-1 cells using GTX25190 Integrin beta 3 (phospho Tyr773) antibody. Panel e is a no primary antibody control.

Green : Primary antibody

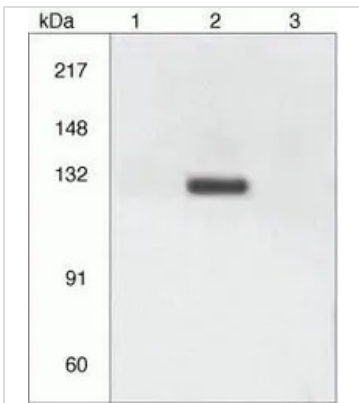
Blue : Nuclei

Red : Actin

Fixation : 4% paraformaldehyde

Permeabilization : 0.1% Triton X-100 for 10 minutes

Dilution : 1:250 dilution in 0.1% BSA and incubated for 3 hours at room temperature


GTX25190 IP Image

Melanoma cells transfected with human Integrin α v and wild-type (WT) or mutant (Y773F) human Integrin beta3 were analyzed. Integrin beta3 was immunoprecipitated then incubated with GTX25190 Integrin beta 3 (phospho Tyr773) antibody along with lysates corresponding to non-phosphorylated Integrin beta3 (1), phosphorylated WT Integrin beta3 (2), or phosphorylated Y773F mutant Integrin beta3 (3). Elimination of signal in site-directed mutant demonstrates antibody specificity.



For full product information, images and publications, please visit our [website](#).