

p70 S6K (phospho Thr229) antibody

Cat. No. GTX25231

Host	Rabbit
Clonality	Polyclonal
Isotype	IgG
Applications	WB, ICC/IF
Reactivity	Human, Rat

References (3)

Package

50 µl

Applications

Application Note

*Optimal dilutions/concentrations should be determined by the researcher.

Suggested dilution	Recommended dilution
WB	Assay dependent
ICC/IF	1:250

Not tested in other applications.

Calculated MW 59 kDa. ([Note](#))

Properties

Form	Liquid
Buffer	PBS, 0.1% BSA, 50% Glycerol
Preservative	0.05% Sodium azide
Storage	Store as concentrated solution. Centrifuge briefly prior to opening vial. For short-term storage (1-2 weeks), store at 4°C. For long-term storage, aliquot and store at -20°C or below. Avoid multiple freeze-thaw cycles.
Concentration	Batch dependent (Please refer to the vial label for the specific concentration.)
Immunogen	The antiserum was produced against a chemically synthesized phosphopeptide derived from the region of human p70-S6K that contains threonine 229. The sequence is conserved in rat.
Purification	Purified by antigen-affinity chromatography
Conjugation	Unconjugated

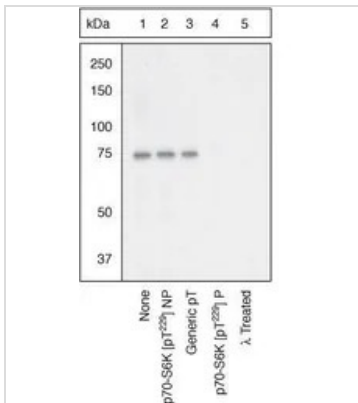
Note

For laboratory research use only. Not for any clinical, therapeutic, or diagnostic use in humans or animals. Not for animal or human consumption.

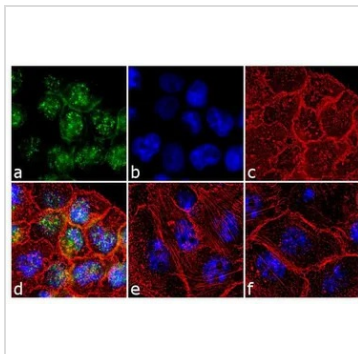
Purchasers shall not, and agree not to enable third parties to, analyze, copy, reverse engineer or otherwise attempt to determine the structure or sequence of the product.



For full product information, images and publications, please visit our [website](#).

DATA IMAGES

GTX25231 WB Image

WB (peptide competition) analysis of Jurkat cells using GTX25231 p70 S6K (phospho Thr229) antibody prior incubated with the non-phosphorylated peptide corresponding to the phosphopeptide immunogen (Lane 2), a generic phosphothreonine-containing peptide (Lane 3), or the phosphopeptide immunogen (Lane 4). The data show that only the immunogen phosphopeptide blocks the signal, demonstrating the specificity of the antibody. The membrane treated with phosphatase (Lane 5) eliminates the signal further verifying that the antibody is phospho-specific.


GTX25231 ICC/IF Image

ICC/IF analysis of A431 cells treated with 200 ng/ml of EGF for 10 minutes using GTX25231 p70 S6K (phospho Thr229) antibody. Panel e is untreated cell with nuclear localization. Panel f represents control cells with no primary antibody to assess background.

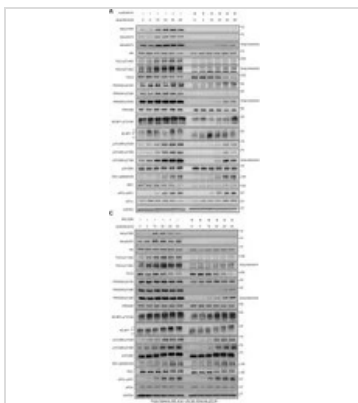
Green : Primary antibody

Blue : Nuclei

Red : Actin

Fixation : 4% paraformaldehyde

Permeabilization : 0.1% Triton X-100 for 10 minutes


GTX25231 WB Image

The data was published in the journal Life Sci Alliance in 2019. [PMID: 30923191](https://pubmed.ncbi.nlm.nih.gov/30923191/)



For full product information, images and publications, please visit our [website](https://www.genetex.com).