

NFAT1 (phospho Ser54) antibody

Cat. No. GTX25246

Host	Rabbit
Clonality	Polyclonal
Isotype	IgG
Applications	WB, ICC/IF, FCM
Reactivity	Human, Mouse

References (3)

Package

50 µl

Applications

Application Note

*Optimal dilutions/concentrations should be determined by the researcher.

Suggested dilution	Recommended dilution
WB	Assay dependent
ICC/IF	1:250
FCM	1:20

Not tested in other applications.

Calculated MW 100 kDa. ([Note](#))

Properties

Form	Liquid
Buffer	PBS, 0.1% BSA, 50% Glycerol
Preservative	0.05% Sodium azide
Storage	Store as concentrated solution. Centrifuge briefly prior to opening vial. For short-term storage (1-2 weeks), store at 4°C. For long-term storage, aliquot and store at -20°C or below. Avoid multiple freeze-thaw cycles.
Concentration	Batch dependent (Please refer to the vial label for the specific concentration.)
Immunogen	The antiserum was produced against a chemically synthesized phosphopeptide derived from a region of mouse NFAT1 that contains serine 54.
Purification	Purified by antigen-affinity chromatography
Conjugation	Unconjugated

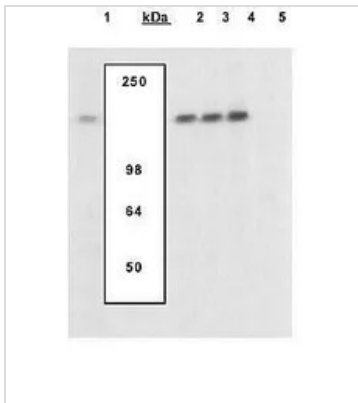
Note

For laboratory research use only. Not for any clinical, therapeutic, or diagnostic use in humans or animals. Not for animal or human consumption.

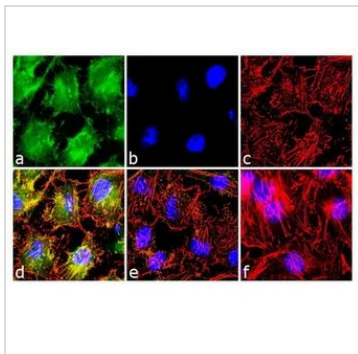
Purchasers shall not, and agree not to enable third parties to, analyze, copy, reverse engineer or otherwise attempt to determine the structure or sequence of the product.



For full product information, images and publications, please visit our [website](#).

DATA IMAGES

GTX25246 WB Image

WB analysis of murine T cells treated with PMA and Ca^{2+} ionophore ionomycin (Lane 2-5) using GTX25246 NFAT1 (phospho Ser54) antibody prior incubated with the non-phosphopeptide corresponding to the phosphopeptide immunogen (Lane 3), a generic phosphoserine containing peptide (Lane 4), or the phosphopeptide immunogen (Lane 5). The data show that only the immunogen phosphopeptide blocks the signal, demonstrating the specificity of the antibody.


GTX25246 ICC/IF Image

ICC/IF analysis of HeLa cells treated with 200nM of PMA for 20 minutes using GTX25246 NFAT1 (phospho Ser54) antibody. Panel e is untreated cell with no signal. Panel f represents control cells with no primary antibody to assess background.

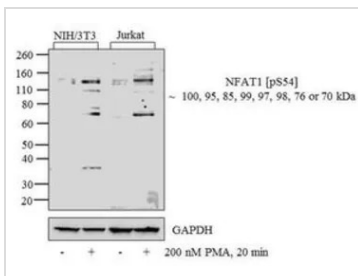
Green : Primary antibody

Blue : Nuclei

Red : Actin

Fixation : 4% paraformaldehyde

Permeabilization : 0.1% Triton X-100 for 10 minutes


GTX25246 WB Image

WB analysis of whole cell extracts (30 μg lysate) of NIH/3T3 (Lane 1) treated for 20 minutes with 200 nM of PMA (Lane 2), Jurkat (Lane 3) treated for 20 minutes with 200 nM of PMA (Lane 4) using GTX25246 NFAT1 (phospho Ser54) antibody.

Dilution : 1:500-1:2000



For full product information, images and publications, please visit our [website](https://www.genetex.com).