

## USP20 antibody, C-term

Cat. No. GTX25272

|              |            |
|--------------|------------|
| Host         | Goat       |
| Clonality    | Polyclonal |
| Isotype      | IgG        |
| Applications | WB, IHC-P  |
| Reactivity   | Human      |

Package  
100 µg

## Applications

## Application Note

\*Optimal dilutions/concentrations should be determined by the researcher.

| Suggested dilution | Recommended dilution |
|--------------------|----------------------|
| WB                 | 1-3µg/ml             |
| IHC-P              | 3µg/ml               |

**Note : Human Lymph Node shows strongest staining in smooth muscle cells surrounding a vessel. Data obtained from a previous batch (different goat).**

Not tested in other applications.

**Calculated MW** 102 kDa. ([Note](#))

## Properties

|               |  |
|---------------|--|
| Form          | Liquid   |
| Buffer        | TBS, 0.5% BSA  |
| Preservative  | 0.02% Sodium azide   |
| Storage       | Store as concentrated solution. Centrifuge briefly prior to opening vial. For short-term storage (1-2 weeks), store at 4°C. For long-term storage, aliquot and store at -20°C or below. Avoid multiple freeze-thaw cycles. |
| Concentration | 0.50 mg/ml (Please refer to the vial label for the specific concentration.)  |
| Immunogen     | Peptide with sequence C-HGEQKIEAETRAV, from the C Terminus of the protein sequence according to NP_006667.3.   |
| Purification  | Purified by ammonium sulphate precipitation followed by antigen affinity chromatography  |
| Conjugation   | Unconjugated   |

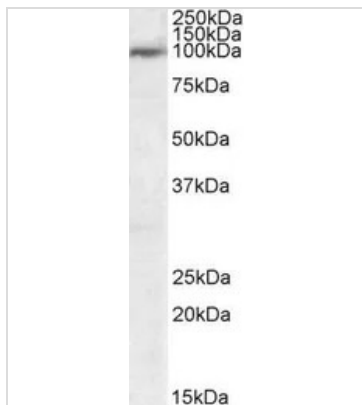
## Note

For laboratory research use only. Not for any clinical, therapeutic, or diagnostic use in humans or animals. Not for animal or human consumption.

Purchasers shall not, and agree not to enable third parties to, analyze, copy, reverse engineer or otherwise attempt to determine the structure or sequence of the product.



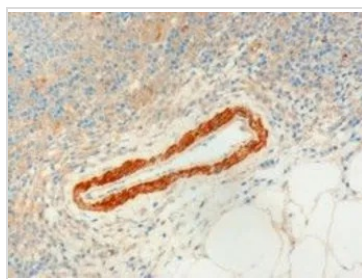
For full product information, images and publications, please visit our [website](#).

**DATA IMAGES**

**GTX25272 WB Image**

WB analysis of human tonsil lysate using GTX25272 USP20 antibody, C-term.

Dilution : 1µg/ml

Loading : 35µg protein in RIPA buffer


**GTX25272 IHC-P Image**

IHC-P analysis of human lymph node using GTX25272 USP20 antibody, C-term.

Antigen retrieval : Tris/EDTA buffer pH 9

Dilution : 3µg/ml



For full product information, images and publications, please visit our [website](https://www.genetex.com).