

## NIPP1 antibody, C-term

Cat. No. GTX25300

Host	Goat
Clonality	Polyclonal
Isotype	IgG
Applications	WB, IHC-P
Reactivity	Human, Mouse

**Package**  
100 µg

## Applications

## Application Note

\*Optimal dilutions/concentrations should be determined by the researcher.

Suggested dilution	Recommended dilution
WB	0.3-1µg/ml
IHC-P	2.5-3.8µg/ml

**Note : Human Thymus shows speckled staining of nuclei.**

Not tested in other applications.

Calculated MW	38 kDa. ( <a href="#">Note</a> )
Product Note	This antibody is expected to recognise all three human isoforms of this protein.

## Properties

Form	Liquid
Buffer	TBS, 0.5% BSA
Preservative	0.02% Sodium azide
Storage	Store as concentrated solution. Centrifuge briefly prior to opening vial. For short-term storage (1-2 weeks), store at 4°C. For long-term storage, aliquot and store at -20°C or below. Avoid multiple freeze-thaw cycles.
Concentration	0.50 mg/ml (Please refer to the vial label for the specific concentration.)
Immunogen	Peptide with sequence C-EAWPGKKPTPSLLI, from the C Terminus of the protein sequence according to NP_002704.1; NP_054829.2; NP_612568.1.
Purification	Purified by ammonium sulphate precipitation followed by antigen affinity chromatography
Conjugation	Unconjugated



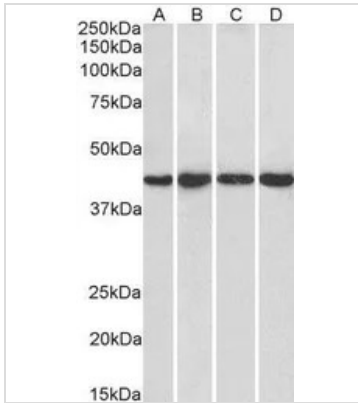
For full product information, images and publications, please visit our [website](#).

Date 2026 / 01 / 06 Page 1 of 2

For laboratory research use only. Not for any clinical, therapeutic, or diagnostic use in humans or animals. Not for animal or human consumption.

**Note**

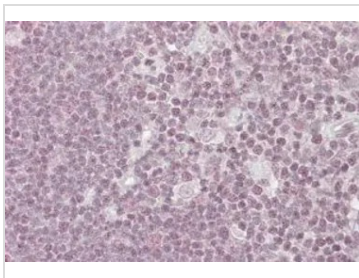
Purchasers shall not, and agree not to enable third parties to, analyze, copy, reverse engineer or otherwise attempt to determine the structure or sequence of the product.

**DATA IMAGES**

**GTX25300 WB Image**

WB analysis of HeLa (A), HepG2 (B), Jurkat (C) and NIH-3T3 (D) nuclear lysates using GTX25300 NIPP1 antibody, C-term.

Dilution : 1µg/ml

Loading : 35µg protein in RIPA buffer


**GTX25300 IHC-P Image**

IHC-P analysis of human thymus using GTX25300 NIPP1 antibody, C-term.

Antigen retrieval : citrate buffer pH 6

Dilution : 3.8µg/ml



For full product information, images and publications, please visit our [website](https://www.genetex.com).