

## FBXL12 antibody, C-term

Cat. No. GTX25305

Host	Goat
Clonality	Polyclonal
Isotype	IgG
Applications	IHC-P
Reactivity	Human

Package  
100 µg

## Applications

## Application Note

\*Optimal dilutions/concentrations should be determined by the researcher.

Suggested dilution	Recommended dilution
IHC-P	4-6µg/ml

**Note : Human Lung shows staining of ciliated epithelial cells in the bronchioles.**

Not tested in other applications.

## Properties

Form	Liquid
Buffer	TBS, 0.5% BSA
Preservative	0.02% Sodium azide
Storage	Store as concentrated solution. Centrifuge briefly prior to opening vial. For short-term storage (1-2 weeks), store at 4°C. For long-term storage, aliquot and store at -20°C or below. Avoid multiple freeze-thaw cycles.
Concentration	0.50 mg/ml (Please refer to the vial label for the specific concentration.)
Immunogen	Peptide with sequence RACPKEsMDWWM, from the C Terminus of the protein sequence according to NP_060173.1.
Purification	Purified by ammonium sulphate precipitation followed by antigen affinity chromatography
Conjugation	Unconjugated

## Note

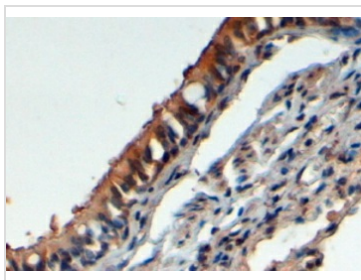
For laboratory research use only. Not for any clinical, therapeutic, or diagnostic use in humans or animals. Not for animal or human consumption.

Purchasers shall not, and agree not to enable third parties to, analyze, copy, reverse engineer or otherwise attempt to determine the structure or sequence of the product.



For full product information, images and publications, please visit our [website](#).

## DATA IMAGES



### GTX25305 IHC-P Image

IHC-P analysis of human lung tissue using GTX25305 FBXL12 antibody, C-term.

Antigen retrieval : Heat induced antigen retrieval with citrate buffer pH 6

Dilution : 4µg/ml

Antigen retrieval : Heat induced antigen retrieval with citrate buffer pH 6

Dilution : 4µg/ml



For full product information, images and publications, please visit our [website](#).