

FANCD2 antibody [FI-17]

Cat. No. GTX25360

Host	Mouse
Clonality	Monoclonal
Isotype	IgG1
Applications	WB, IP, ChIP assay
Reactivity	Human

Package
100 µl

Applications

Application Note

*Optimal dilutions/concentrations should be determined by the researcher.

Suggested dilution	Recommended dilution
WB	1:1000 - 1:2000
IP	Assay dependent
ChIP assay	1:10 - 1:500

Not tested in other applications.

Calculated MW 164 kDa. ([Note](#))**Product Note** We do not recommend use of this product for Mouse,Hamster samples.

Properties

Form	Liquid
Buffer	Ascites
Preservative	0.1% Sodium azide
Storage	Store as concentrated solution. Centrifuge briefly prior to opening vial. For short-term storage (1-2 weeks), store at 4°C. For long-term storage, aliquot and store at -20°C or below. Avoid multiple freeze-thaw cycles.
Immunogen	Human FANCD2 fusion protein [Swiss-Prot# Q9BXW9]
Purification	Unpurified
Conjugation	Unconjugated

Note

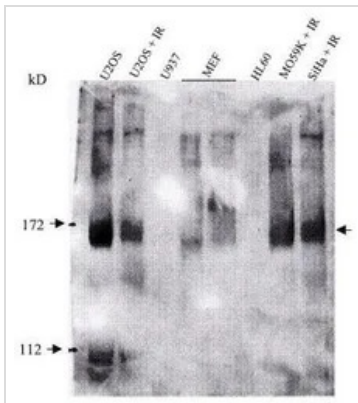
For laboratory research use only. Not for any clinical, therapeutic, or diagnostic use in humans or animals. Not for animal or human consumption.

Purchasers shall not, and agree not to enable third parties to, analyze, copy, reverse engineer or otherwise attempt to determine the structure or sequence of the product.



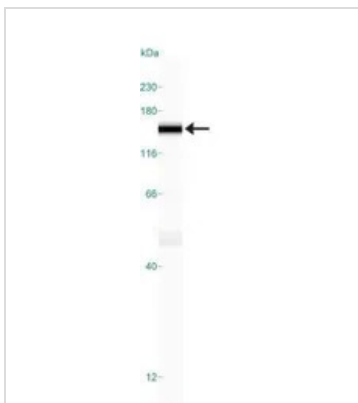
For full product information, images and publications, please visit our [website](#).

DATA IMAGES



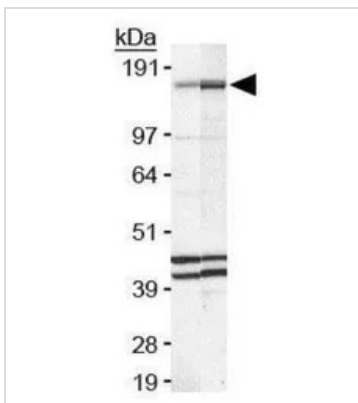
GTx25360 WB Image

WB analysis of multiple cells treated with 10-Gy IR using GTx25360 FANCD2 antibody [FI-17].
Dilution : 1:1000



GTx25360 WB Image

WB analysis of HeLa cell lysate using GTx25360 FANCD2 antibody [FI-17].



GTx25360 WB Image

WB analysis of MCF-7 (lane 1) and HeLa (lane 2) cell lysate using GTx25360 FANCD2 antibody [FI-17].



For full product information, images and publications, please visit our [website](https://www.genetex.com).