

eIF2 alpha antibody [EIF2a]

Cat. No. GTX25369

Host	Mouse
Clonality	Monoclonal
Isotype	IgG1
Applications	WB, ICC/IF, IHC-P, FCM
Reactivity	Human, Mouse, Rat, Primate

References (1)

Package

50 µg

Applications

Application Note

*Optimal dilutions/concentrations should be determined by the researcher.

Suggested dilution	Recommended dilution
WB	1:500-1:1000
ICC/IF	1:250
IHC-P	1:10-1:50
FCM	Assay dependent

Not tested in other applications.

Calculated MW 36 kDa. ([Note](#))

Product Note This antibody recognizes the alpha subunit of eukaryotic translation initiation factor 2 (eIF-2A).

Properties

Form	Liquid
Buffer	PBS
Preservative	0.1% Sodium azide
Storage	Store as concentrated solution. Centrifuge briefly prior to opening vial. For short-term storage (1-2 weeks), store at 4°C. For long-term storage, aliquot and store at -20°C or below. Avoid multiple freeze-thaw cycles.
Concentration	Batch dependent (Please refer to the vial label for the specific concentration.)
Immunogen	Recombinant human eIF-2-alpha.
Purification	Purified IgG
Conjugation	Unconjugated

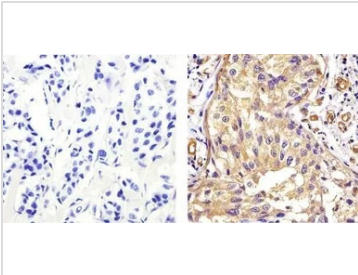


For full product information, images and publications, please visit our [website](#).

For laboratory research use only. Not for any clinical, therapeutic, or diagnostic use in humans or animals. Not for animal or human consumption.

Note

Purchasers shall not, and agree not to enable third parties to, analyze, copy, reverse engineer or otherwise attempt to determine the structure or sequence of the product.

DATA IMAGES

GTX25369 IHC-P Image

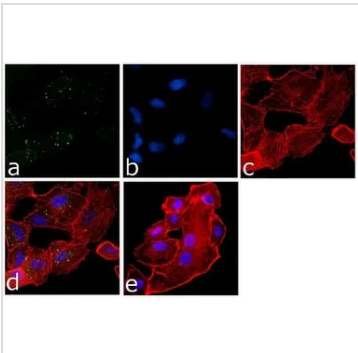
IHC-P analysis of human colon carcinoma tissue using GTX25369 eIF2 alpha antibody [EIF2a].

Right : Primary antibody

Left : Negative control without primary antibody

Antigen retrieval : 10mM sodium citrate (pH 6.0), microwaved for 8-15 min

Dilution : 1:20


GTX25369 ICC/IF Image

ICC/IF analysis of A549 cells using GTX25369 eIF2 alpha antibody [EIF2a]. Panel e is a no primary antibody control.

Green : Primary antibody

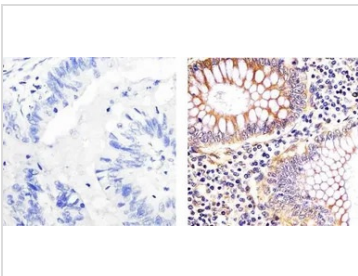
Blue : Nuclei

Red : Actin

Fixation : 4% paraformaldehyde

Permeabilization : 0.25% Triton X-100 for 10 minutes

Dilution : 1:250 dilution in 1% BSA and incubated for 3 hours at room temperature


GTX25369 IHC-P Image

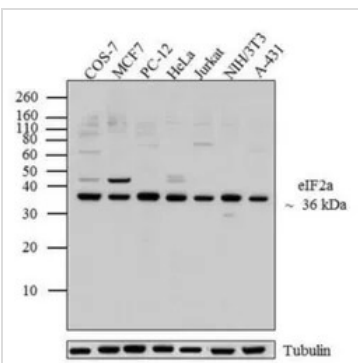
IHC-P analysis of human colon carcinoma tissue using GTX25369 eIF2 alpha antibody [EIF2a].

Right : Primary antibody

Left : Negative control without primary antibody

Antigen retrieval : 10mM sodium citrate (pH 6.0), microwaved for 8-15 min

Dilution : 1:20


GTX25369 WB Image

WB analysis of whole cell extracts (20 µg lysate) of COS-7 (Lane 1), MCF7 (Lane 2), PC-12 (Lane 3), HeLa (lane 4), Jurkat (lane 5), NIH/3T3 (lane 6) and A-431 (lane 7) using GTX25369 eIF2 alpha antibody [EIF2a].

Dilution : 1:500-1:1000



For full product information, images and publications, please visit our [website](https://www.genetex.com).