

TERT antibody [2D8]

Cat. No. GTX25405

Host	Mouse
Clonality	Monoclonal
Isotype	IgM
Applications	WB, ICC/IF, IHC-P, IHC-Fr
Reactivity	Human

Package
100 µl

Applications

Application Note

*Optimal dilutions/concentrations should be determined by the researcher.

Suggested dilution	Recommended dilution
WB	1:500 - 1:1000
ICC/IF	1:50 - 1:200
IHC-P	1:50 - 1:100
IHC-Fr	1:50 - 1:100

Not tested in other applications.

Calculated MW 127 kDa. ([Note](#))

Properties

Form	Liquid
Buffer	Ascites
Preservative	0.1% Sodium azide
Storage	Store as concentrated solution. Centrifuge briefly prior to opening vial. For short-term storage (1-2 weeks), store at 4°C. For long-term storage, aliquot and store at -20°C or below. Avoid multiple freeze-thaw cycles.
Immunogen	Full-length recombinant human Telomerase reverse transcriptase from insect cells. [UniProt# O14746]
Purification	Unpurified
Conjugation	Unconjugated

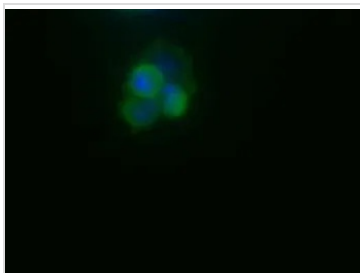
Note

For laboratory research use only. Not for any clinical, therapeutic, or diagnostic use in humans or animals. Not for animal or human consumption.

Purchasers shall not, and agree not to enable third parties to, analyze, copy, reverse engineer or otherwise attempt to determine the structure or sequence of the product.



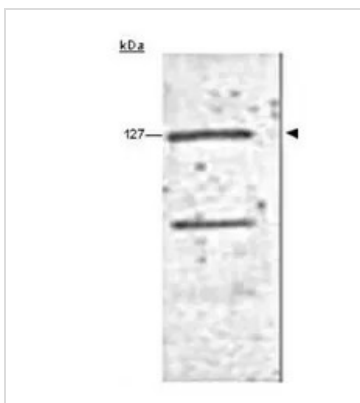
For full product information, images and publications, please visit our [website](#).

DATA IMAGES

GTX25405 ICC/IF Image

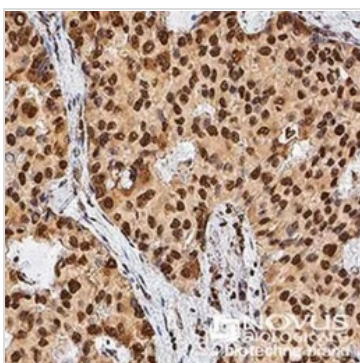
ICC/IF analysis of HepG2 cells using GTX25405 TERT antibody [2D8].

Green : primary antibody

Blue : Hoechst 33258


GTX25405 WB Image

WB analysis of MJ90 cell lysate using GTX25405 TERT antibody [2D8].


GTX25405 IHC-P Image

IHC-P analysis of human liver cancer tissue using GTX25405 TERT antibody [2D8].

Dilution : 1:600



For full product information, images and publications, please visit our [website](#).