

ATP5B antibody [4.3E8.D10]

Cat. No. GTX25432

Host	Mouse
Clonality	Monoclonal
Isotype	IgG1
Applications	WB, ICC/IF, IP, IHC
Reactivity	Human, Mouse, Rat

Package
100 µg

Applications

Application Note

*Optimal dilutions/concentrations should be determined by the researcher.

Suggested dilution	Recommended dilution
WB	1-2 µg/ml
ICC/IF	1:100-1:1000
IP	2-5 µg
IHC	Assay dependent

Not tested in other applications.

Calculated MW 56 kDa. ([Note](#))

Properties

Form	Liquid
Buffer	PBS, 0.1% BSA
Preservative	0.05% Sodium azide
Storage	Store as concentrated solution. Centrifuge briefly prior to opening vial. For short-term storage (1-2 weeks), store at 4°C. For long-term storage, aliquot and store at -20°C or below. Avoid multiple freeze-thaw cycles.
Concentration	1 mg/ml (Please refer to the vial label for the specific concentration.)
Immunogen	Intact rat mitochondria.
Purification	Purified IgG
Conjugation	Unconjugated

Note

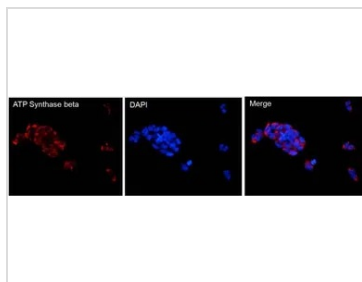
For laboratory research use only. Not for any clinical, therapeutic, or diagnostic use in humans or animals. Not for animal or human consumption.

Purchasers shall not, and agree not to enable third parties to, analyze, copy, reverse engineer or otherwise attempt to determine the structure or sequence of the product.



For full product information, images and publications, please visit our [website](#).

DATA IMAGES



GTX25432 ICC/IF Image

ICC/IF analysis of HEK293T cells using GTX25432 ATP5B antibody [4.3E8.D10].

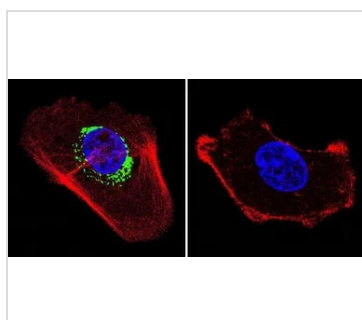
Red :ATPSynthase beta (ATP5B)

Blue : Nuclei

Fixation : formaldehyde

Permeabilization : 0.3% Triton X-100

Dilution : 1:100 overnight at 4 °C



GTX25432 ICC/IF Image

ICC/IF analysis of A431 cells using GTX25432 ATP5B antibody [4.3E8.D10]. Cells were probed without (right) or with(left) an antibody.

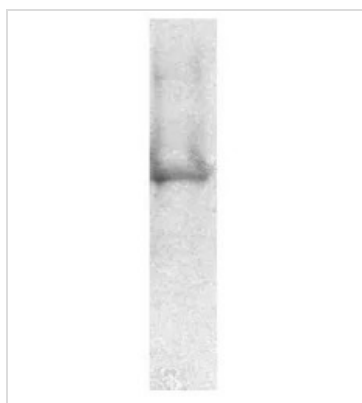
Green : Primary antibody

Blue : Nuclei

Red : Actin

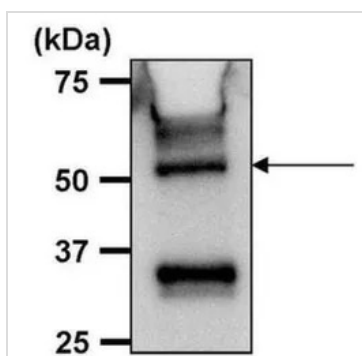
Fixation : formaldehyde

Dilution : 1:200 overnight at 4°C



GTX25432 WB Image

WB analysis of rat neuronal/glial cell extract using GTX25432 ATP5B antibody [4.3E8.D10].



GTX25432 IP Image

IP analysis of THP-1 cell lysates using GTX25432 ATP5B antibody [4.3E8.D10].

GTX25432 was used as IP and IB antibody

IP reaction : 5µl antibody / 500µg lysate

Dilution : 1:1000



For full product information, images and publications, please visit our [website](https://www.genetex.com).