

Hsp70 antibody [3A3]

Cat. No. GTX25439

Host	Mouse
Clonality	Monoclonal
Isotype	IgG1
Applications	WB, ICC/IF, IHC-P, FCM, IP, ELISA, Gel supershift assays, IHC, Neutralizing/Inhibition
Reactivity	Human, Mouse, Rat, Yeast, Drosophila, Pig, Monkey, Amphibians, Echinoderms, Plant, Fish, Arthropod, Mollusc, Primate, Avian, Insect

References (8)

Package

50 µl

Applications

Application Note

*Optimal dilutions/concentrations should be determined by the researcher.

Suggested dilution	Recommended dilution
WB	1:1000 - 1:5000
ICC/IF	1:100
IHC-P	1:200
FCM	Assay dependent
IP	2 µl
ELISA	Assay dependent
Gel supershift assays	Assay dependent
IHC	Assay dependent
Neutralizing/Inhibition	Assay dependent

Not tested in other applications.

Product Note

This antibody detects several members of the heat shock protein 70 kDa (HSP70) gene family including HSP70, HSC70, p75, and following heat shock, HSP72 from yeast, Drosophila, fish, porcine, plant, mouse, avian, arthropod (red claw crayfish and black tiger prawn), amphibian, non-human primate, and human samples. Epitope mapping with a panel of HSP70 deletion mutants suggests that the epitope recognized is located between amino acids 504-617 of human HSP70, a region that has been shown to be involved in stress-induced nucleolar localization.

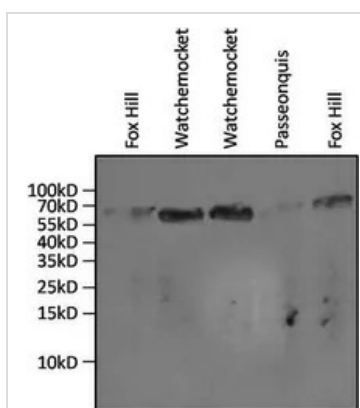
Properties

Form	Liquid
Buffer	PBS
Preservative	0.05% Sodium azide



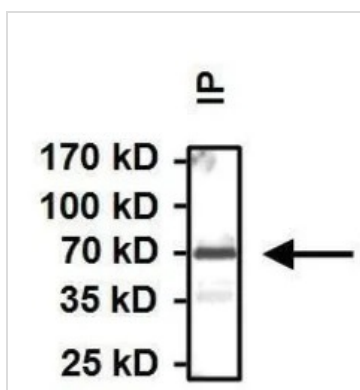
For full product information, images and publications, please visit our [website](#).

Storage	Store as concentrated solution. Centrifuge briefly prior to opening vial. For short-term storage (1-2 weeks), store at 4°C. For long-term storage, aliquot and store at -20°C or below. Avoid multiple freeze-thaw cycles.
Concentration	1 mg/ml (Please refer to the vial label for the specific concentration.)
Immunogen	Human recombinant HSP70 overexpressed in E. coli.
Purification	Protein G purified
Conjugation	Unconjugated
Note	For laboratory research use only. Not for any clinical, therapeutic, or diagnostic use in humans or animals. Not for animal or human consumption. Purchasers shall not, and agree not to enable third parties to, analyze, copy, reverse engineer or otherwise attempt to determine the structure or sequence of the product.

DATA IMAGES

GTX25439 WB Image

WB analysis of 20ul of gill tissue lysates from the salt marsh mussel, *Guekensia demissa* isolated from various coves in Rhode Island (indicated above the lanes) using GTX25439 Hsp70 antibody [3A3].

Dilution : 1:1000


GTX25439 IP Image

IP analysis of HeLa cell lysates using GTX25439 Hsp70 antibody [3A3].

IP reaction : 2μg antibody / 500μg lysate

Dilution : 1:1000



For full product information, images and publications, please visit our [website](https://www.genetex.com).