

Calpain 1 antibody [2H2A7C2]

Cat. No. GTX25441

Host	Mouse
Clonality	Monoclonal
Isotype	IgG1
Applications	WB, ICC/IF
Reactivity	Human, Mouse, Rat, Bovine, Pig

Package
100 µl

Applications

Application Note

*Optimal dilutions/concentrations should be determined by the researcher.

Suggested dilution	Recommended dilution
WB	1:1,000
ICC/IF	1:20-1:25

Not tested in other applications.

Calculated MW 82 kDa. ([Note](#))

Product Note

This antibody does not cross-react with m-calpain, n-calpain, calmodulin or calpastatin. This antibody recognizes an epitope between amino acids 245-265 (domain II) of human mu-calpain.

Properties

Form	Liquid
Buffer	Ascites
Preservative	0.05% Sodium azide
Storage	Store as concentrated solution. Centrifuge briefly prior to opening vial. For short-term storage (1-2 weeks), store at 4°C. For long-term storage, aliquot and store at -20°C or below. Avoid multiple freeze-thaw cycles.
Immunogen	Purified bovine skeletal muscle 80 kDa mu-calpain subunit.
Purification	Unpurified
Conjugation	Unconjugated

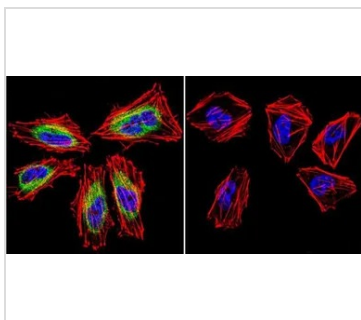
Note

For laboratory research use only. Not for any clinical, therapeutic, or diagnostic use in humans or animals. Not for animal or human consumption.

Purchasers shall not, and agree not to enable third parties to, analyze, copy, reverse engineer or otherwise attempt to determine the structure or sequence of the product.



For full product information, images and publications, please visit our [website](#).

DATA IMAGES

GTX25441 ICC/IF Image

ICC/IF analysis of HeLa cells using GTX25441 Calpain 1 antibody [2H2A7C2]. Cells were probed without (right) or with(left) an antibody.

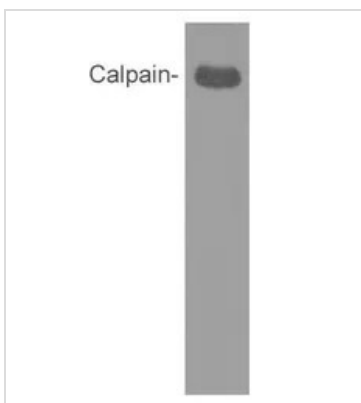
Green : Primary antibody

Blue : Nuclei

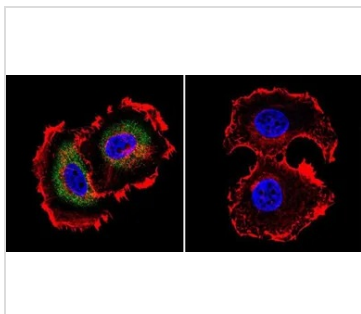
Red : Actin

Fixation : formaldehyde

Dilution : 1:20 overnight at 4°C


GTX25441 WB Image

WB analysis of mouse lung extract using GTX25441 Calpain 1 antibody [2H2A7C2].


GTX25441 ICC/IF Image

ICC/IF analysis of MCF-7 cells using GTX25441 Calpain 1 antibody [2H2A7C2]. Cells were probed without (right) or with(left) an antibody.

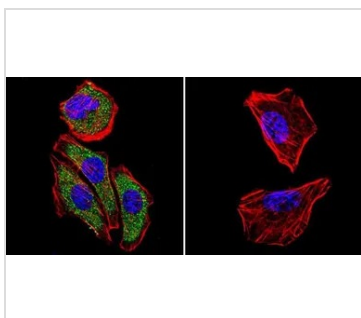
Green : Primary antibody

Blue : Nuclei

Red : Actin

Fixation : formaldehyde

Dilution : 1:20 overnight at 4°C


GTX25441 ICC/IF Image

ICC/IF analysis of U251 cells using GTX25441 Calpain 1 antibody [2H2A7C2]. Cells were probed without (right) or with(left) an antibody.

Green : Primary antibody

Blue : Nuclei

Red : Actin

Fixation : formaldehyde

Dilution : 1:20 overnight at 4°C



For full product information, images and publications, please visit our [website](https://www.genetex.com).