

# Hsp70 antibody [2A4]

**Cat. No. GTX25442**

<b>Host</b>	Mouse
<b>Clonality</b>	Monoclonal
<b>Isotype</b>	IgM
<b>Application</b>	WB, ICC/IF, IHC-P, IP, Neutralizing/Inhibition
<b>Reactivity</b>	Human, Mouse, Rat, Zebrafish, Yeast, Drosophila, Amphibians, Fish, Primate, Avian

Reference ( 1 )  
Package  
100 µl

## APPLICATION

### Application Note

\*Optimal dilutions/concentrations should be determined by the researcher.

Suggested dilution	Recommended dilution
WB	1:1000 - 1:2500
ICC/IF	1:100-1:200
IHC-P	1:200
IP	2 µg
Neutralizing/Inhibition	Assay dependent

Not tested in other applications.

### Product Note

This antibody detects several members of the heat shock protein 70 kDa (HSP70) gene family including HSP70, HSC70 and, following heat shock, HSP72 from yeast, Drosophila, fish, mouse, avian, amphibian and human samples. Epitope mapping with a panel of HSP70 deletion mutants suggests that the epitope recognized is located between amino acids 437-479 of human HSP70.

## PROPERTIES

<b>Form</b>	Liquid
<b>Buffer</b>	PBS
<b>Preservative</b>	0.05% Sodium azide
<b>Storage</b>	Store as concentrated solution. Centrifuge briefly prior to opening vial. For short-term storage (1-2 weeks), store at 4°C. For long-term storage, aliquot and store at -20°C or below. Avoid multiple freeze-thaw cycles.
<b>Concentration</b>	3.5 mg/ml (Please refer to the vial label for the specific concentration.)
<b>Immunogen</b>	Human recombinant HSP70 over expressed in E. coli.
<b>Purification</b>	Protein A purified
<b>Conjugation</b>	Unconjugated

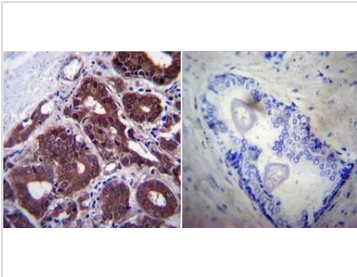


For full product information, images and publications, please visit our [website](#).

For laboratory research use only. Not for any clinical, therapeutic, or diagnostic use in humans or animals. Not for animal or human consumption.

**Note**

Purchasers shall not, and agree not to enable third parties to, analyze, copy, reverse engineer or otherwise attempt to determine the structure or sequence of the product.

**DATA IMAGES**

**GTx25442 IHC-P Image**

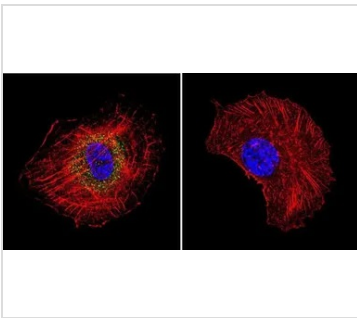
IHC-P analysis of human prostate carcinoma tissue using GTx25442 Hsp70 antibody [2A4].

Left : Primary antibody

Right : Negative control without primary antibody

Antigen retrieval : heat induced antigen retrieval was performed using 10mM sodium citrate (pH6.0) buffer, microwaved for 8-15 minutes

Dilution : 1:200


**GTx25442 ICC/IF Image**

ICC/IF analysis of NIH-3T3 cells using GTx25442 Hsp70 antibody [2A4]. Cells were probed without (right) or with(left) an antibody.

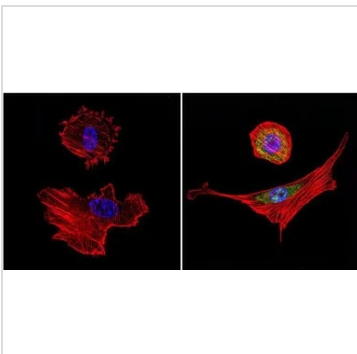
Green : Primary antibody

Blue : Nuclei

Red : Actin

Fixation : formaldehyde

Dilution : 1:100 overnight at 4 °C


**GTx25442 ICC/IF Image**

ICC/IF analysis of NIH-3T3 cells using GTx25442 Hsp70 antibody [2A4]. Cells were probed without (left) or with(right) an antibody.

Green : Primary antibody

Blue : Nuclei

Red : Actin

Fixation : Formalin

Permeabilization : 0.1% Triton X-100 in TBS for 5-10 minute

Dilution : 1:200 and incubated overnight in a humidified chamber



For full product information, images and publications, please visit our [website](https://www.genetex.com).