

# PDGF Receptor alpha + beta (phospho Tyr572/Tyr574) antibody

**Cat. No. GTX25443**

<b>Host</b>	Rabbit
<b>Clonality</b>	Polyclonal
<b>Isotype</b>	IgG
<b>Applications</b>	WB, ICC/IF
<b>Reactivity</b>	Human, Mouse

**Package**  
50 µl

## Applications

### Application Note

\*Optimal dilutions/concentrations should be determined by the researcher.

Suggested dilution	Recommended dilution
WB	Assay dependent
ICC/IF	1:100-1:500

Not tested in other applications.

## Properties

<b>Form</b>	Liquid
<b>Buffer</b>	PBS, 0.1% BSA, 50% Glycerol
<b>Preservative</b>	0.05% Sodium azide
<b>Storage</b>	Store as concentrated solution. Centrifuge briefly prior to opening vial. For short-term storage (1-2 weeks), store at 4°C. For long-term storage, aliquot and store at -20°C or below. Avoid multiple freeze-thaw cycles.
<b>Concentration</b>	Batch dependent (Please refer to the vial label for the specific concentration.)
<b>Immunogen</b>	The antiserum was produced against a chemically synthesized phosphopeptide derived from the region of human PDGFR $\alpha$ that contains tyrosines 572 and 574 and PDGFR $\alpha$ tyrosines 579 and 581. The sequence is conserved in PDGFR $\alpha$ mouse, rat and frog.
<b>Purification</b>	Purified by antigen-affinity chromatography
<b>Conjugation</b>	Unconjugated

### Note

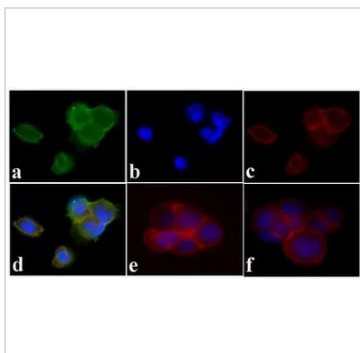
For laboratory research use only. Not for any clinical, therapeutic, or diagnostic use in humans or animals. Not for animal or human consumption.

Purchasers shall not, and agree not to enable third parties to, analyze, copy, reverse engineer or otherwise attempt to determine the structure or sequence of the product.



For full product information, images and publications, please visit our [website](#).

## DATA IMAGES



### GTx25443 ICC/IF Image

ICC/IF analysis of MCF7 cells treated with PDGF (50 ng/mL for 10 min) using GTx25443 PDGF Receptor alpha + beta (phospho Tyr572/Tyr574) antibody. Panel e is untreated cell with no signal. Panel f represents control cells with no primary antibody to assess background.

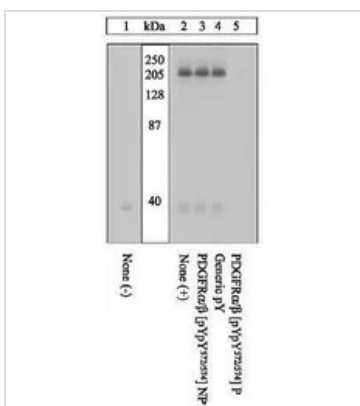
Green : Primary antibody

Blue : Nuclei

Red : Actin

Fixation : 4% paraformaldehyde

Permeabilization : 0.25% Triton X-100 for 10 minutes



### GTx25443 WB Image

WB analysis of NIH3T3 stimulated with 50ng/mL PDGF-BB for 10 mins (Lane 2-5) using GTx25443 PDGF Receptor alpha + beta (phospho Tyr572/Tyr574) antibody prior incubated with the non-phosphopeptide corresponding to the phosphopeptide immunogen (Lane 3), a generic phosphotyrosine containing peptide(Lane 4), or the phosphopeptide immunogen (Lane 5). The data show that only the immunogen phosphopeptide blocks the signal, demonstrating the specificity of the antibody.



For full product information, images and publications, please visit our [website](https://www.genetex.com).