

# Hsp70 antibody [4G4]

**Cat. No. GTX25444**

<b>Host</b>	Mouse
<b>Clonality</b>	Monoclonal
<b>Isotype</b>	IgG1
<b>Applications</b>	WB, ICC/IF, IHC-P, FCM, IP, Cytotoxic Assay, IHC, IM, Neutralizing/Inhibition
<b>Reactivity</b>	Human, Mouse, Primate

**Package**

50 µl

## Applications

### Application Note

\*Optimal dilutions/concentrations should be determined by the researcher.

Suggested dilution	Recommended dilution
WB	1:1000 - 1:5000
ICC/IF	1:100
IHC-P	1:20 - 50
FCM	1:100 - 1:200
IP	1:1000
Cytotoxic Assay	Assay dependent
IHC	Assay dependent
IM	Assay dependent
Neutralizing/Inhibition	Assay dependent

Not tested in other applications.

### Product Note

This antibody specifically detects HSP70 and does not cross-react with other members of the HSP70 family. Epitope mapping with a panel of HSP70 deletion mutants suggests that the epitope recognized is located between amino acids 504-617 of human HSP70, a region that has been shown to be involved in stress-induced nucleolar localization.

## Properties

<b>Form</b>	Liquid
<b>Buffer</b>	Ascites diluted with PBS
<b>Preservative</b>	No preservatives
<b>Storage</b>	Store as concentrated solution. Centrifuge briefly prior to opening vial. For short-term storage (1-2 weeks), store at 4°C. For long-term storage, aliquot and store at -20°C or below. Avoid multiple freeze-thaw cycles.
<b>Immunogen</b>	Human recombinant HSP70 over expressed in E. coli.



For full product information, images and publications, please visit our [website](#).

**Purification** Unpurified

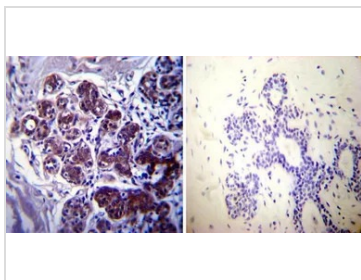
**Conjugation** Unconjugated

**Note**

For laboratory research use only. Not for any clinical, therapeutic, or diagnostic use in humans or animals. Not for animal or human consumption.

Purchasers shall not, and agree not to enable third parties to, analyze, copy, reverse engineer or otherwise attempt to determine the structure or sequence of the product.

DATA IMAGES



**GTX25444 IHC-P Image**

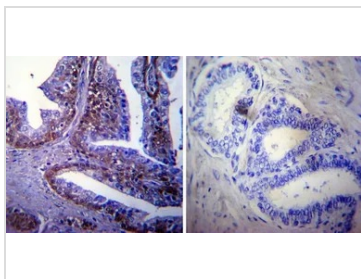
IHC-P analysis of human breast tissue using GTX25444 Hsp70 antibody [4G4].

Left : Primary antibody

Right : Negative control without primary antibody

Antigen retrieval : heat induced antigen retrieval was performed using 10mM sodium citrate (pH6.0) buffer, microwaved for 8-15 minutes

Dilution : 1:50



**GTX25444 IHC-P Image**

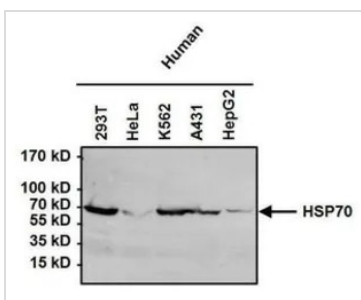
IHC-P analysis of human prostate carcinoma tissue using GTX25444 Hsp70 antibody [4G4].

Left : Primary antibody

Right : Negative control without primary antibody

Antigen retrieval : heat induced antigen retrieval was performed using 10mM sodium citrate (pH6.0) buffer, microwaved for 8-15 minutes

Dilution : 1:20



**GTX25444 WB Image**

WB analysis of 50 ug of the indicated whole cell lysates using GTX25444 Hsp70 antibody [4G4].

Dilution : 1:1000



For full product information, images and publications, please visit our [website](http://www.genetex.com).