

VPS34 antibody

Cat. No. GTX25451

Host	Rabbit
Clonality	Polyclonal
Isotype	IgG
Applications	WB, ICC/IF, IHC-P
Reactivity	Human

Package
400 µl

Applications

Application Note

*Optimal dilutions/concentrations should be determined by the researcher.

Suggested dilution	Recommended dilution
WB	1:1000
ICC/IF	1:10-1:50
IHC-P	1:50-1:100

Not tested in other applications.

Calculated MW 102 kDa. ([Note](#))

Properties

Form	Liquid
Buffer	PBS
Preservative	0.09% Sodium azide
Storage	Store as concentrated solution. Centrifuge briefly prior to opening vial. For short-term storage (1-2 weeks), store at 4°C. For long-term storage, aliquot and store at -20°C or below. Avoid multiple freeze-thaw cycles.
Concentration	Batch dependent (Please refer to the vial label for the specific concentration.)
Immunogen	KLH conjugated synthetic peptide between 24-53 amino acids from the N-terminal region of human PI3KC3.
Purification	Protein G purified, followed by dialysis against PBS.
Conjugation	Unconjugated

Note

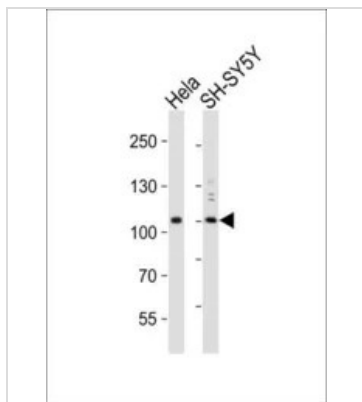
For laboratory research use only. Not for any clinical, therapeutic, or diagnostic use in humans or animals. Not for animal or human consumption.

Purchasers shall not, and agree not to enable third parties to, analyze, copy, reverse engineer or otherwise attempt to determine the structure or sequence of the product.



For full product information, images and publications, please visit our [website](#).

DATA IMAGES

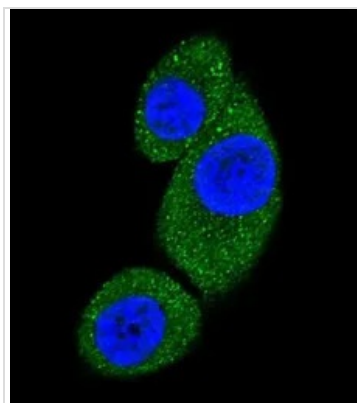


GTX25451 WB Image

WB analysis of HeLa, SH-SY5Y cell using GTX25451 VPS34 antibody.

Loading : 20ug per lane

Dilution : 1:1000

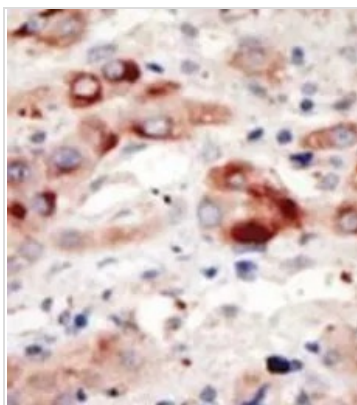


GTX25451 ICC/IF Image

ICC/IF analysis of HeLa cells using GTX25451 VPS34 antibody.

Green : VPS34

Blue : DAPI



GTX25451 IHC-P Image

IHC-P analysis of human hepatocarcinoma using GTX25451 VPS34 antibody.



For full product information, images and publications, please visit our [website](https://www.genetex.com).