

VEGF Receptor 2 (phospho Tyr1054) antibody

Cat. No. GTX25472

Host	Rabbit
Clonality	Polyclonal
Isotype	IgG
Applications	WB, IP
Reactivity	Human, Mouse

Package
50 µl

Applications

Application Note

*Optimal dilutions/concentrations should be determined by the researcher.

Suggested dilution	Recommended dilution
WB	0.35-1.0 µg/ml
IP	Assay dependent

Not tested in other applications.

Properties

Form	Liquid
Buffer	PBS, 0.1% BSA
Preservative	0.05% Sodium azide
Storage	Store as concentrated solution. Centrifuge briefly prior to opening vial. For short-term storage (1-2 weeks), store at 4°C. For long-term storage, aliquot and store at -20°C or below. Avoid multiple freeze-thaw cycles.
Concentration	Batch dependent (Please refer to the vial label for the specific concentration.)
Immunogen	Synthetic phosphopeptide from human VEGFR2 containing tyrosine 1054. The sequence is conserved in mouse and rat.
Purification	Purified by antigen-affinity chromatography
Conjugation	Unconjugated

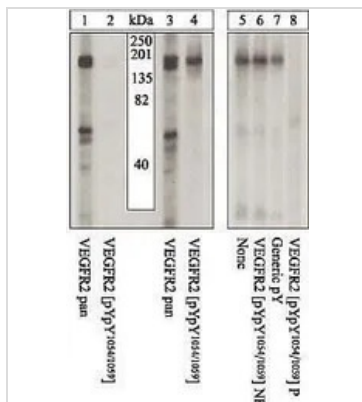
Note

For laboratory research use only. Not for any clinical, therapeutic, or diagnostic use in humans or animals. Not for animal or human consumption.

Purchasers shall not, and agree not to enable third parties to, analyze, copy, reverse engineer or otherwise attempt to determine the structure or sequence of the product.



For full product information, images and publications, please visit our [website](#).

DATA IMAGES

GTX25472 WB Image

WB analysis of PAE cells transfected with a chimeric receptor and stimulated with CSF (Lane 1-4) or from NIH3T3 cells transfected with human VEGFR2 left unstimulated (Lane 5) or stimulated with VEGF (Lane 6) using GTX25472 VEGF Receptor 2 (phospho Tyr1054) antibody.



For full product information, images and publications, please visit our [website](https://www.genetex.com).