

## VEGF Receptor 2 (phospho Tyr1054/Tyr1059) antibody

**Cat. No. GTX25473**

<b>Host</b>	Rabbit
<b>Clonality</b>	Polyclonal
<b>Isotype</b>	IgG
<b>Applications</b>	WB, ICC/IF, FCM
<b>Reactivity</b>	Human, Mouse

**Package**

50 µl

## Applications

**Application Note**

\*Optimal dilutions/concentrations should be determined by the researcher.

Suggested dilution	Recommended dilution
WB	1:1000
ICC/IF	1:250
FCM	1:20

Not tested in other applications.

**Calculated MW** 152 kDa. ([Note](#))

## Properties

<b>Form</b>	Liquid
<b>Buffer</b>	PBS, 0.1% BSA, 50% Glycerol
<b>Preservative</b>	0.05% Sodium azide
<b>Storage</b>	Store as concentrated solution. Centrifuge briefly prior to opening vial. For short-term storage (1-2 weeks), store at 4°C. For long-term storage, aliquot and store at -20°C or below. Avoid multiple freeze-thaw cycles.
<b>Concentration</b>	Batch dependent (Please refer to the vial label for the specific concentration.)
<b>Immunogen</b>	The antiserum was produced against a chemically synthesized phosphopeptide derived from the region of human VEGFR2 that contains tyrosines 1054 and 1059. The sequence is conserved among multiple species including mouse and rat.
<b>Purification</b>	Purified by antigen-affinity chromatography
<b>Conjugation</b>	Unconjugated

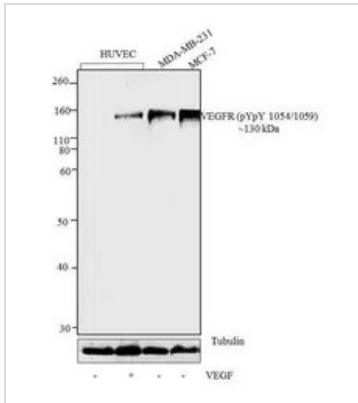
**Note**

For laboratory research use only. Not for any clinical, therapeutic, or diagnostic use in humans or animals. Not for animal or human consumption.

Purchasers shall not, and agree not to enable third parties to, analyze, copy, reverse engineer or otherwise attempt to determine the structure or sequence of the product.

For full product information, images and publications, please visit our [website](#).

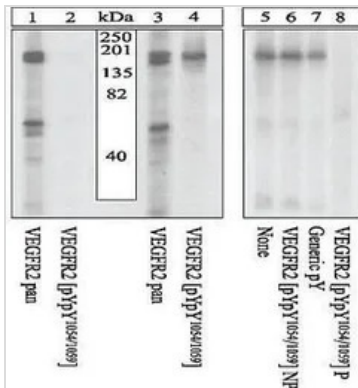
DATA IMAGES



**GTX25473 WB Image**

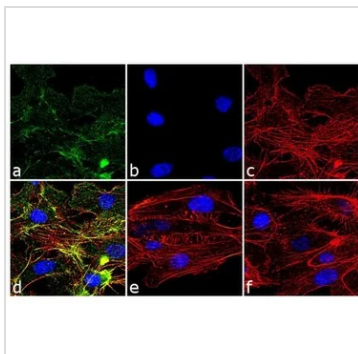
WB analysis of whole cell extracts (30 µg lysate) of HUVEC (Lane 1), treated with 25ng/mL VEGF for 5 minutes (lane 2), MDA-MB-231 (lane 3), and MCF7 (Lane 4) using GTX25473 VEGF Receptor 2 (phospho Tyr1054/Tyr1059) antibody.

Dilution : 1:1000



**GTX25473 WB Image**

WB analysis of PAE cells transfected with a chimeric receptor unstimulated (Lane 1, 2) or stimulated with 40ng/mL CSF-1 for 10 minutes (Lane 3-8) using GTX25473 VEGF Receptor 2 (phospho Tyr1054/Tyr1059) antibody.



**GTX25473 ICC/IF Image**

ICC/IF analysis of HUVEC cell treated with 100ng of VEGF for 30 minutes using GTX25473 VEGF Receptor 2 (phospho Tyr1054/Tyr1059) antibody. Panel e is untreated cell with no signal. Panel f represents control cells with no primary antibody to assess background.

Green : Primary antibody

Blue : Nuclei

Red : Actin

Fixation : 4% paraformaldehyde

Permeabilization : 0.1% Triton X-100 for 10 minutes



For full product information, images and publications, please visit our [website](https://www.genetex.com).