

FGFR2 antibody

Cat. No. GTX25476

Host	Rabbit
Clonality	Polyclonal
Isotype	IgG
Applications	WB, ICC/IF, IHC-P, FCM
Reactivity	Human, Mouse

References (3)

Package

400 µl

Applications

Application Note

*Optimal dilutions/concentrations should be determined by the researcher.

Suggested dilution	Recommended dilution
WB	1:1000
ICC/IF	1:50-1:100
IHC-P	1:50-1:100
FCM	1:25

Not tested in other applications.

Calculated MW 92 kDa. ([Note](#))

Properties

Form	Liquid
Buffer	PBS
Preservative	0.09% Sodium azide
Storage	Store as concentrated solution. Centrifuge briefly prior to opening vial. For short-term storage (1-2 weeks), store at 4°C. For long-term storage, aliquot and store at -20°C or below. Avoid multiple freeze-thaw cycles.
Concentration	Batch dependent (Please refer to the vial label for the specific concentration.)
Immunogen	KLH conjugated synthetic peptide between 22-51 amino acids from the N-terminal region of human FGFR2.
Purification	Protein A purified, followed by peptide affinity purification.
Conjugation	Unconjugated

Note

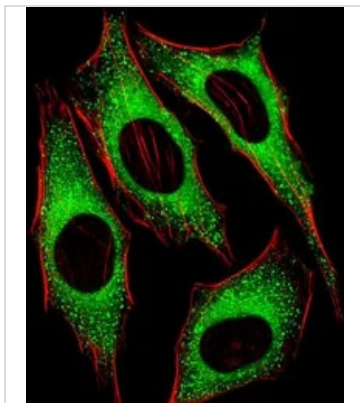
For laboratory research use only. Not for any clinical, therapeutic, or diagnostic use in humans or animals. Not for animal or human consumption.

Purchasers shall not, and agree not to enable third parties to, analyze, copy, reverse engineer or otherwise attempt to determine the structure or sequence of the product.



For full product information, images and publications, please visit our [website](#).

DATA IMAGES



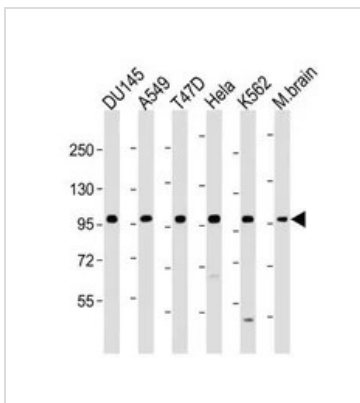
GTX25476 ICC/IF Image

ICC/IF analysis of HeLa cells using GTX25476 FGFR2 antibody.

Green : FGFR2

Red : Actin filament

Dilution : 1:25



GTX25476 WB Image

WB analysis of various samples using GTX25476 FGFR2 antibody.

Lane 1: DU145 whole cell lysate

Lane 2: A549 whole cell lysate

Lane 3: T47D whole cell lysate

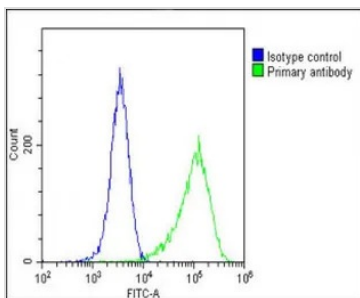
Lane 4: HeLa whole cell lysate

Lane 5: K562 whole cell lysate

Lane 6: M.brain whole lysate

Loading : 20 µg per lane

Dilution : 1:1000-1:2000



GTX25476 FCM Image

FACS analysis of HeLa cells using GTX25476 FGFR2 antibody.

Green : FGFR2

Blue : Isotype control

Fixation : 2% paraformaldehyde (PFA) (10 min)

Permeabilization : 90% methanol (10 min)

Dilution : 1:25



For full product information, images and publications, please visit our [website](https://www.genetex.com).