

Rac1 + CDC42 (phospho Ser71) antibody

Cat. No. GTX25482

Host	Rabbit
Clonality	Polyclonal
Isotype	IgG
Applications	WB, IHC-P, FCM
Reactivity	Human

References (1)

Package

50 µl

Applications

Application Note

*Optimal dilutions/concentrations should be determined by the researcher.

Suggested dilution	Recommended dilution
WB	Assay dependent
IHC-P	1:10-1:100
FCM	1:20

Not tested in other applications.

Properties

Form	Liquid
Buffer	PBS, 0.1% BSA, 50% Glycerol
Preservative	0.05% Sodium azide
Storage	Store as concentrated solution. Centrifuge briefly prior to opening vial. For short-term storage (1-2 weeks), store at 4°C. For long-term storage, aliquot and store at -20°C or below. Avoid multiple freeze-thaw cycles.
Concentration	Batch dependent (Please refer to the vial label for the specific concentration.)
Immunogen	The antiserum was produced against a chemically synthesized phosphopeptide derived from a region of human Rac1-protein that contains serine 71. The sequence is conserved in human and mouse Rac 1, 2, and 3, and cdc42 human, mouse, rat, dog and frog.
Purification	Purified by antigen-affinity chromatography
Conjugation	Unconjugated

Note

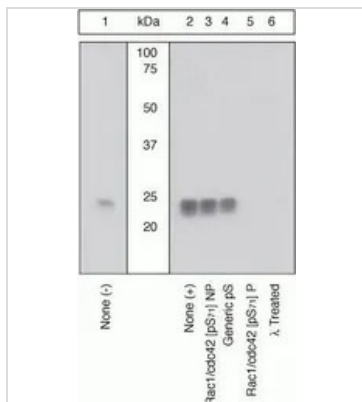
For laboratory research use only. Not for any clinical, therapeutic, or diagnostic use in humans or animals. Not for animal or human consumption.

Purchasers shall not, and agree not to enable third parties to, analyze, copy, reverse engineer or otherwise attempt to determine the structure or sequence of the product.



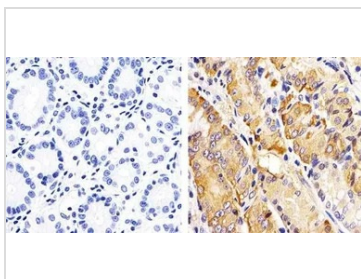
For full product information, images and publications, please visit our [website](#).

DATA IMAGES



GTx25482 WB Image

WB (peptide competition) analysis of A431 cells stimulated with EGF (Lane 2-6) using GTx25482 RAC1 + CDC42 (phospho Ser71) antibody prior incubated with the non-phosphopeptide corresponding to the immunogen (Lane 3), a generic phosphoserine containing peptide (Lane 4), or, the phosphopeptide immunogen (Lane 5). The data show that only the immunogen phosphopeptide blocks the signal, demonstrating the specificity of the antibody. The membrane treated with phosphatase (Lane 6) eliminates the signal further verifying that the antibody is phospho-specific.



GTx25482 IHC-P Image

IHC-P analysis of human stomach tissue using GTx25482 RAC1 + CDC42 (phospho Ser71) antibody.

Right : Primary antibody

Left : Negative control without primary antibody

Antigen retrieval : 10mM sodium citrate (pH 6.0), microwaved for 8-15 min

Dilution : 1:20



For full product information, images and publications, please visit our [website](https://www.genetex.com).