

## TSH receptor antibody [49]

Cat. No. GTX25492

Host	Mouse
Clonality	Monoclonal
Isotype	IgG1
Application	WB, ICC/IF, ELISA
Reactivity	Human, Pig

Package  
100 µl

## APPLICATION

## Application Note

\*Optimal dilutions/concentrations should be determined by the researcher.

Suggested dilution	Recommended dilution
WB	1:250
ICC/IF	1:250
ELISA	Assay dependent

Not tested in other applications.

Calculated MW 87 kDa. ( [Note](#) )

Product Note This antibody recognizes an epitope between amino acid residues 277-296 of human TSHR.

## PROPERTIES

Form	Liquid
Buffer	Ascites
Preservative	0.05% Sodium azide
Storage	Store as concentrated solution. Centrifuge briefly prior to opening vial. For short-term storage (1-2 weeks), store at 4°C. For long-term storage, aliquot and store at -20°C or below. Avoid multiple freeze-thaw cycles.
Immunogen	Purified extracellular domain of recombinant human thyrotropin receptor.
Purification	Unpurified
Conjugation	Unconjugated

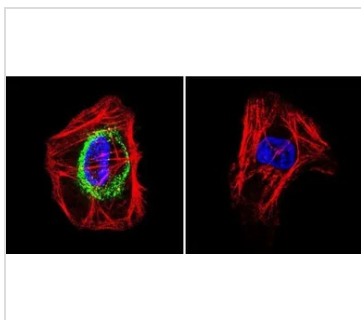
## Note

For laboratory research use only. Not for any clinical, therapeutic, or diagnostic use in humans or animals. Not for animal or human consumption.

Purchasers shall not, and agree not to enable third parties to, analyze, copy, reverse engineer or otherwise attempt to determine the structure or sequence of the product.



For full product information, images and publications, please visit our [website](#).

**DATA IMAGES**

**GTX25492 ICC/IF Image**

ICC/IF analysis of A431 cells using GTX25492 TSH receptor antibody [49]. Cells were probed without (right) or with (left) an antibody.

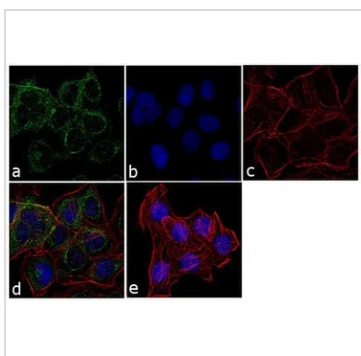
Green : Primary antibody

Blue : Nuclei

Red : Actin

Fixation : formaldehyde

Dilution : 1:200 overnight at 4°C


**GTX25492 ICC/IF Image**

ICC/IF analysis of A431 cells using GTX25492 TSH receptor antibody [49]. Panel e is a no primary antibody control.

Green : Primary antibody

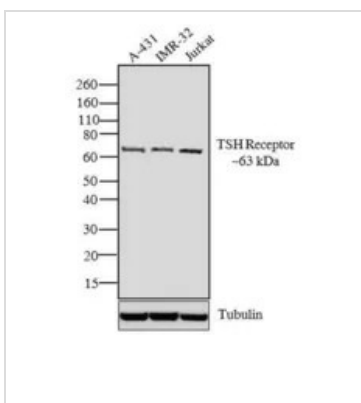
Blue : Nuclei

Red : Actin

Fixation : 4% paraformaldehyde

Permeabilization : 0.1% Triton X-100 for 10 minute

Dilution : 1:250 dilution in 0.1% BSA and incubated for 3 hours at room temperature


**GTX25492 WB Image**

WB analysis of membrane-enriched extracts (30 µg lysate) of A-431 (Lane 1), IMR-32 (Lane 2) and Jurkat (Lane 3) using GTX25492 TSH receptor antibody [49].

Dilution : 1:250



For full product information, images and publications, please visit our [website](https://www.genetex.com).