

## JAK1 (phospho Tyr1022/1023) antibody

Cat. No. GTX25493

Host	Rabbit
Clonality	Polyclonal
Isotype	IgG
Applications	WB, ICC/IF
Reactivity	Human, Mouse, Rat, Rabbit, Primate

References ( 2 )

Package

50 µl

## Applications

## Application Note

\*Optimal dilutions/concentrations should be determined by the researcher.

Suggested dilution	Recommended dilution
WB	Assay dependent
ICC/IF	1:250

Not tested in other applications.

Calculated MW 133 kDa. ( [Note](#) )

## Properties

Form	Liquid
Buffer	PBS, 0.1% BSA, 50% Glycerol
Preservative	0.05% Sodium azide
Storage	Store as concentrated solution. Centrifuge briefly prior to opening vial. For short-term storage (1-2 weeks), store at 4°C. For long-term storage, aliquot and store at -20°C or below. Avoid multiple freeze-thaw cycles.
Concentration	Batch dependent (Please refer to the vial label for the specific concentration.)
Immunogen	The antiserum was produced against a chemically synthesized phosphopeptide derived from a region of human JAK1 protein that contains tyrosines 1022 and 1023. The sequence is conserved in mouse and pig.
Purification	Purified by antigen-affinity chromatography
Conjugation	Unconjugated

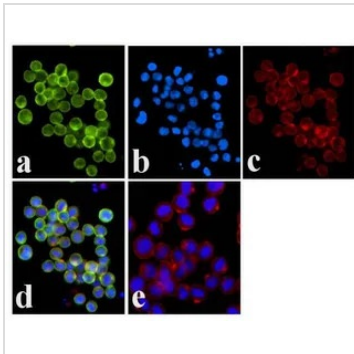
## Note

For laboratory research use only. Not for any clinical, therapeutic, or diagnostic use in humans or animals. Not for animal or human consumption.

Purchasers shall not, and agree not to enable third parties to, analyze, copy, reverse engineer or otherwise attempt to determine the structure or sequence of the product.



For full product information, images and publications, please visit our [website](#).

**DATA IMAGES**

**GTx25493 ICC/IF Image**

ICC/IF analysis of COLO 205 cells using GTx25493 JAK1 (phospho Tyr1022/1023) antibody. Panel e is a no primary antibody control.

Green : Primary antibody

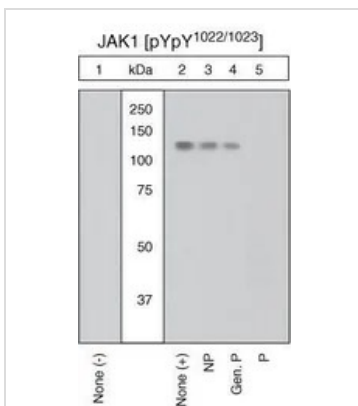
Blue : Nuclei

Red : Actin

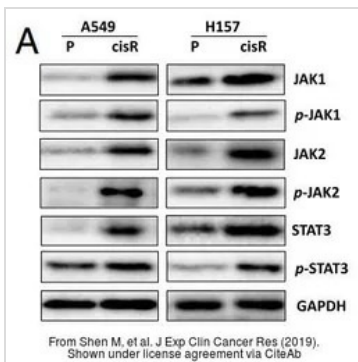
Fixation : 4% paraformaldehyde

Permeabilization : 0.25% Triton X-100 for 10 minutes

Dilution : 1:250 dilution in 1% BSA incubated for 3 hours at room temperature


**GTx25493 WB Image**

WB analysis of samples using GTx25493 JAK1 (phospho Tyr1022/1023) antibody. The data show that only the immunogen phosphopeptide blocks the signal, demonstrating the specificity of the antibody.


**GTx25493 WB Image**

The data was published in the 2019 in J Exp Clin Cancer Res. [PMID: 30961670](https://pubmed.ncbi.nlm.nih.gov/30961670/)



For full product information, images and publications, please visit our [website](https://www.genetex.com).