

Calmodulin antibody [6D4]

Cat. No. GTX25494

Host	Mouse
Clonality	Monoclonal
Isotype	IgG1
Applications	WB, ICC/IF, ELISA
Reactivity	Human, Mouse, Rat, Bovine, Chicken, Bacteria

Package
200 µl

Applications

Application Note

*Optimal dilutions/concentrations should be determined by the researcher.

Suggested dilution	Recommended dilution
WB	1:2,000
ICC/IF	1:250
ELISA	Assay dependent

Not tested in other applications.

Product Note

This antibody does not detect parvalbumin, tropinin, S-100, or myosin light chain kinase (MLCK). Addition of EGTA to buffers completely inhibits antibody staining.

Properties

Form	Liquid
Buffer	Ascites
Preservative	0.05% Sodium azide
Storage	Store as concentrated solution. Centrifuge briefly prior to opening vial. For short-term storage (1-2 weeks), store at 4°C. For long-term storage, aliquot and store at -20°C or below. Avoid multiple freeze-thaw cycles.
Immunogen	Calmodulin purified from Dictyostelium discoideum.
Purification	Unpurified
Conjugation	Unconjugated

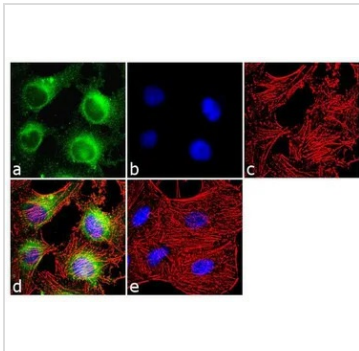
Note

For laboratory research use only. Not for any clinical, therapeutic, or diagnostic use in humans or animals. Not for animal or human consumption.

Purchasers shall not, and agree not to enable third parties to, analyze, copy, reverse engineer or otherwise attempt to determine the structure or sequence of the product.



For full product information, images and publications, please visit our [website](#).

DATA IMAGES

GTX25494 ICC/IF Image

ICC/IF analysis of HeLa cells using GTX25494 Calmodulin antibody [6D4]. Panel e is a no primary antibody control.

Green : Primary antibody

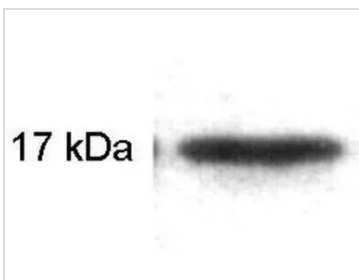
Blue : Nuclei

Red : Actin

Fixation : 4% paraformaldehyde

Permeabilization : 0.1% Triton X-100 for 10 minute

Dilution : 1:250 dilution in 0.1% BSA and incubated for 3 hours at room temperature


GTX25494 WB Image

WB analysis of purified calmodulin protein using GTX25494 Calmodulin antibody [6D4].



For full product information, images and publications, please visit our [website](https://www.genetex.com).