

Phosphotyrosine antibody [IG2]

Cat. No. GTX25592

Host	Mouse
Clonality	Monoclonal
Isotype	IgG1
Applications	WB, ICC/IF, FCM, IP, ELISA
Reactivity	Species independent

Package

50 µg

Applications

Application Note

*Optimal dilutions/concentrations should be determined by the researcher.

Suggested dilution	Recommended dilution
WB	1:100 - 1:1000
ICC/IF	1:50 - 1:200
FCM	Assay dependent
IP	2 µg
ELISA	1 µg/ml

Not tested in other applications.

Properties

Form	Liquid
Buffer	PBS, 40% Glycerol
Preservative	0.05% Sodium azide
Storage	Store as concentrated solution. Centrifuge briefly prior to opening vial. Store at 4°C.
Concentration	1 mg/ml (Please refer to the vial label for the specific concentration.)
Immunogen	O-phospho-L-tyrosine and O-phospho-DL-tyramine
Purification	Purified by affinity chromatography
Conjugation	Unconjugated

Note

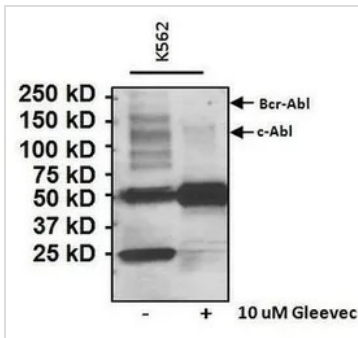
For laboratory research use only. Not for any clinical, therapeutic, or diagnostic use in humans or animals. Not for animal or human consumption.

Purchasers shall not, and agree not to enable third parties to, analyze, copy, reverse engineer or otherwise attempt to determine the structure or sequence of the product.



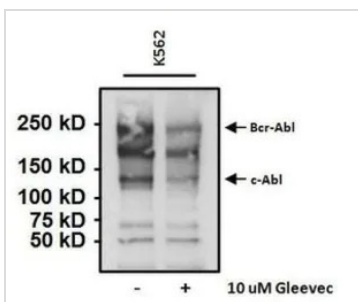
For full product information, images and publications, please visit our [website](#).

DATA IMAGES



GTX25592 WB Image

Tyrosine phosphorylated c-Abl and Bcr-Abl was performed following immunoprecipitation of K562 cell lysates using a c-Abl antibody, from untreated cells (left lane) or cells treated with 10uM of the tyrosine kinase inhibitor Gleevec (right lane) for 24 hours. WB was performed using GTX25592 Phosphotyrosine antibody [IG2] at a dilution of 1:250.



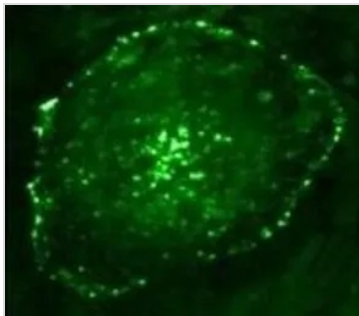
GTX25592 IP Image

IP analysis of K562 cells (left lane) or cells treated with 10uM of the tyrosine kinase inhibitor Gleevec (right lane) for 24 hours using GTX25592 Phosphotyrosine antibody [IG2].

IP antibody:GTX25592

IB antibody : c-abl antibody

IP reaction : 2µg antibody / 500µg lysate



GTX25592 ICC/IF Image

ICC/IF analysis of HeLa cells using GTX25592 Phosphotyrosine antibody [IG2].

Green : Primary antibody



For full product information, images and publications, please visit our [website](https://www.genetex.com).