

alpha A Crystallin antibody

Cat. No. GTX25595

Host	Rabbit
Clonality	Polyclonal
Isotype	IgG
Applications	WB, IHC-P, IHC
Reactivity	Rat, Bovine, Chicken

Package
100 µg

Applications

Application Note

*Optimal dilutions/concentrations should be determined by the researcher.

Suggested dilution	Recommended dilution
WB	0.1 µg/ml
IHC-P	10 µg/ml
IHC	Assay dependent

Not tested in other applications.

Calculated MW	20 kDa. (Note)
Product Note	This antibody does not detect the unphosphorylated form of the protein.

Properties

Form	Liquid
Buffer	PBS, 3% BSA
Preservative	0.05% Sodium azide
Storage	Store as concentrated solution. Centrifuge briefly prior to opening vial. For short-term storage (1-2 weeks), store at 4°C. For long-term storage, aliquot and store at -20°C or below. Avoid multiple freeze-thaw cycles.
Concentration	Batch dependent (Please refer to the vial label for the specific concentration.)
Immunogen	Purified alpha-A Crystallin from bovine lens.
Purification	Purified by antigen-affinity chromatography
Conjugation	Unconjugated

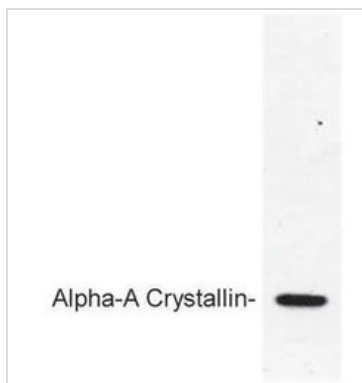


For full product information, images and publications, please visit our [website](#).

For laboratory research use only. Not for any clinical, therapeutic, or diagnostic use in humans or animals. Not for animal or human consumption.

Note

Purchasers shall not, and agree not to enable third parties to, analyze, copy, reverse engineer or otherwise attempt to determine the structure or sequence of the product.

DATA IMAGES

GTX25595 WB Image

WB analysis of bovine lens extract using GTX25595 alpha A Crystallin antibody.



For full product information, images and publications, please visit our [website](#).