

Proteosome Activator, 200 kDa antibody

Cat. No. GTX25620

Host	Rabbit
Clonality	Polyclonal
Isotype	IgG
Applications	WB, ICC/IF, IP
Reactivity	Human, Mouse, Rat, Bovine

Package
100 µl

Applications

Application Note

*Optimal dilutions/concentrations should be determined by the researcher.

Suggested dilution	Recommended dilution
WB	1:250
ICC/IF	1:600
IP	Assay dependent

Not tested in other applications.

Calculated MW 211 kDa. ([Note](#))

Properties

Form	Liquid
Buffer	Serum
Preservative	0.05% Sodium azide
Storage	Store as concentrated solution. Centrifuge briefly prior to opening vial. For short-term storage (1-2 weeks), store at 4°C. For long-term storage, aliquot and store at -20°C or below. Avoid multiple freeze-thaw cycles.
Immunogen	Synthetic peptide corresponding to residues T(1620) K L P K K R K R D P G S V G(1634) of human PA200.
Purification	Unpurified
Conjugation	Unconjugated

Note

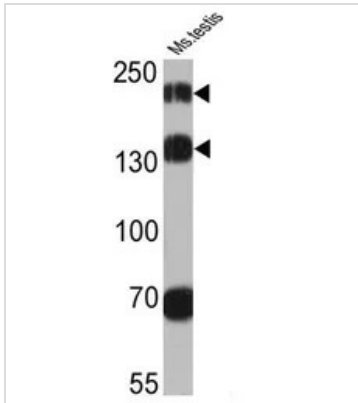
For laboratory research use only. Not for any clinical, therapeutic, or diagnostic use in humans or animals. Not for animal or human consumption.

Purchasers shall not, and agree not to enable third parties to, analyze, copy, reverse engineer or otherwise attempt to determine the structure or sequence of the product.



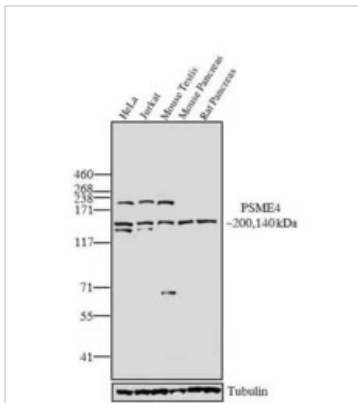
For full product information, images and publications, please visit our [website](#).

DATA IMAGES



GTx25620 WB Image

WB analysis of 25 ug of mouse testis cell lysates using GTx25620 Proteasome Activator Subunit 4 antibody.
Dilution : 1:2000



GTx25620 WB Image

WB analysis of whole cell extracts (30 ug lysate) of HeLa (Lane 1), Jurkat (Lane 2), and tissue extracts (30 μ g lysate) of Mouse testis (Lane 3), Mouse pancreas (Lane 4), and Rat pancreas (Lane 5) using GTx25620 Proteasome Activator Subunit 4 antibody.
Dilution : 1:250



For full product information, images and publications, please visit our [website](https://www.genetex.com).