

Thyroid Hormone Receptor alpha antibody

Cat. No. GTX25621

Host	Rabbit
Clonality	Polyclonal
Isotype	IgG
Applications	WB, ICC/IF, IHC-P, IHC-Fr, Gel supershift assays, IHC
Reactivity	Zebra finch, Human, Mouse, Rat, Sheep, Chicken, Xenopus, Primate

References (3)
 Package
 100 µl

Applications

Application Note

*Optimal dilutions/concentrations should be determined by the researcher.

Suggested dilution	Recommended dilution
WB	1:200
ICC/IF	1:10-1:200
IHC-P	1:20-1:100
IHC-Fr	Assay dependent
Gel supershift assays	1:10
IHC	Assay dependent

Not tested in other applications.

Calculated MW 55 kDa. ([Note](#))

Product Note This antibody does not detect TRv alpha -2 or TR beta-1.

Properties

Form	Liquid
Buffer	Serum diluted with PBS
Preservative	0.05% Sodium azide
Storage	Store as concentrated solution. Centrifuge briefly prior to opening vial. For short-term storage (1-2 weeks), store at 4°C. For long-term storage, aliquot and store at -20°C or below. Avoid multiple freeze-thaw cycles.
Immunogen	Synthetic Peptide: E(403) V F E D Q E V(410)
Purification	Unpurified
Conjugation	Unconjugated

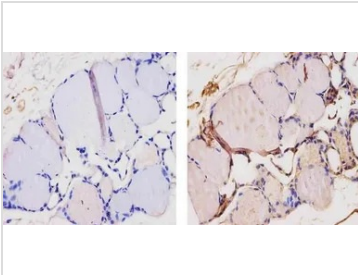


For full product information, images and publications, please visit our [website](#).

For laboratory research use only. Not for any clinical, therapeutic, or diagnostic use in humans or animals. Not for animal or human consumption.

Note
Purchasers shall not, and agree not to enable third parties to, analyze, copy, reverse engineer or otherwise attempt to determine the structure or sequence of the product.

DATA IMAGES

**GTX25621 IHC-P Image**

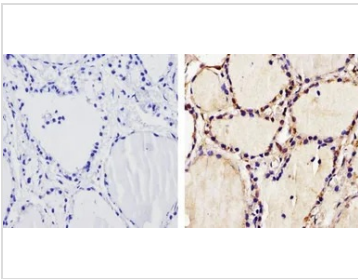
IHC-P analysis of mouse thyroid tissue using GTX25621 Thyroid Hormone Receptor alpha antibody.

Right : Primary antibody

Left : Negative control without primary antibody

Antigen retrieval : 10mM sodium citrate (pH 6.0), microwaved for 8-15 min

Dilution : 1:20

**GTX25621 IHC-P Image**

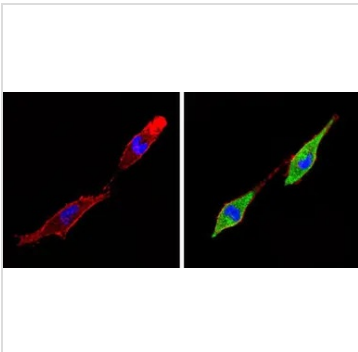
IHC-P analysis of human thyroid tissue using GTX25621 Thyroid Hormone Receptor alpha antibody.

Right : Primary antibody

Left : Negative control without primary antibody

Antigen retrieval : 10mM sodium citrate (pH 6.0), microwaved for 8-15 min

Dilution : 1:500

**GTX25621 ICC/IF Image**

ICC/IF analysis of L6 cells using GTX25621 Thyroid Hormone Receptor alpha antibody. Cells were probed without (left) or with(right) an antibody.

Green : Primary antibody

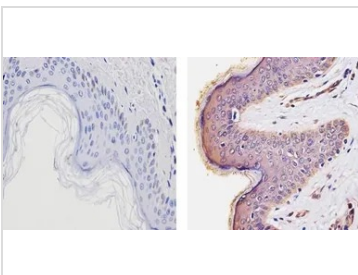
Blue : Nuclei

Red : Actin

Fixation : Formalin

Permeabilization : 0.1% Triton X-100 in TBS for 5-10 minute

Dilution : 1:100 incubated overnight at 4 °C

**GTX25621 IHC-P Image**

IHC-P analysis of human skin tissue using GTX25621 Thyroid Hormone Receptor alpha antibody.

Right : Primary antibody

Left : Negative control without primary antibody

Antigen retrieval : 10mM sodium citrate (pH 6.0), microwaved for 8-15 min

Dilution : 1:100



For full product information, images and publications, please visit our [website](#).