

## c-Kit (phospho Tyr730) antibody

**Cat. No. GTX25633**

<b>Host</b>	Rabbit
<b>Clonality</b>	Polyclonal
<b>Isotype</b>	IgG
<b>Application</b>	WB, IHC-P
<b>Reactivity</b>	Human, Mouse, Rat, Bovine, Dog, Chicken

Package

50 µl

## APPLICATION

**Application Note**

\*Optimal dilutions/concentrations should be determined by the researcher.

Suggested dilution	Recommended dilution
WB	1:1000
IHC-P	1:10-1:50

Not tested in other applications.

**Calculated MW** 110 kDa. ([Note](#))

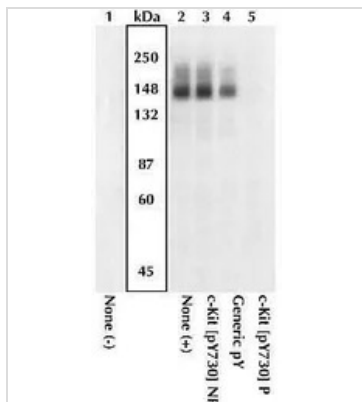
## PROPERTIES

<b>Form</b>	Liquid
<b>Buffer</b>	PBS, 0.1% BSA, 50% Glycerol
<b>Preservative</b>	0.05% Sodium azide
<b>Storage</b>	Store as concentrated solution. Centrifuge briefly prior to opening vial. For short-term storage (1-2 weeks), store at 4°C. For long-term storage, aliquot and store at -20°C or below. Avoid multiple freeze-thaw cycles.
<b>Concentration</b>	Batch dependent (Please refer to the vial label for the specific concentration.)
<b>Immunogen</b>	The antiserum was produced against a chemically synthesized phosphopeptide derived from a region of human c-Kit that contains tyrosine 730. The sequence is conserved in mouse, rat and cow.
<b>Purification</b>	Purified by antigen-affinity chromatography
<b>Conjugation</b>	Unconjugated
<b>Note</b>	<p>For laboratory research use only. Not for any clinical, therapeutic, or diagnostic use in humans or animals. Not for animal or human consumption.</p> <p>Purchasers shall not, and agree not to enable third parties to, analyze, copy, reverse engineer or otherwise attempt to determine the structure or sequence of the product.</p>

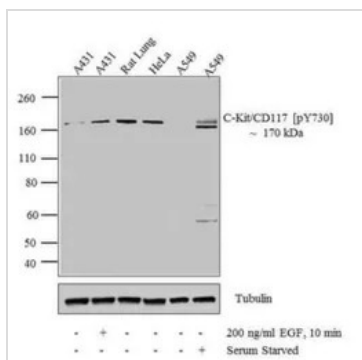


For full product information, images and publications, please visit our [website](#).

Date 2024 / 05 / 16 Page 1 of 2

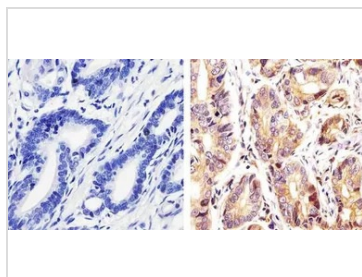
**DATA IMAGES**

**GTX25633 WB Image**

WB analysis of M07e cells left untreated (Lane 1) or treated (Lane 2-5) with SCF using GTX25633 c-Kit (phospho Tyr730) antibody.


**GTX25633 WB Image**

WB analysis of 30 µg of A431 (Lane 1) treated for 10 minutes with 200 ng/ml of EGF (Lane 2), Rat Lung (Lane 3), HeLa (Lane 4), A549 (Lane 5) and serum starved A549 (Lane 6) lysate using GTX25633 c-Kit (phospho Tyr730) antibody.

Dilution : 1:1000


**GTX25633 IHC-P Image**

IHC-P analysis of human gastric carcinoma tissue using GTX25633 c-Kit (phospho Tyr730) antibody.

Right : Primary antibody

Left : Negative control without primary antibody

Antigen retrieval : 10 mM sodium citrate (pH 6.0), microwaved for 8-15 min

Dilution : 1:20



For full product information, images and publications, please visit our [website](https://www.genetex.com).