

## c-Kit (phospho Tyr936) antibody

Cat. No. GTX25635

Host	Rabbit
Clonality	Polyclonal
Isotype	IgG
Applications	WB, ICC/IF, FCM
Reactivity	Human

## Package

50 µl

## Applications

## Application Note

\*Optimal dilutions/concentrations should be determined by the researcher.

Suggested dilution	Recommended dilution
WB	1:250
ICC/IF	1:250
FCM	1:20

Not tested in other applications.

**Calculated MW** 110 kDa. ([Note](#))

## Properties

Form	Liquid
Buffer	PBS, 0.1% BSA, 50% Glycerol
Preservative	0.05% Sodium azide
Storage	Store as concentrated solution. Centrifuge briefly prior to opening vial. For short-term storage (1-2 weeks), store at 4°C. For long-term storage, aliquot and store at -20°C or below. Avoid multiple freeze-thaw cycles.
Concentration	Batch dependent (Please refer to the vial label for the specific concentration.)
Immunogen	The antiserum was produced against a chemically synthesized phosphopeptide derived from a region of human c-Kit that contains tyrosine 936. The sequence is conserved in cow.
Purification	Purified by antigen-affinity chromatography
Conjugation	Unconjugated

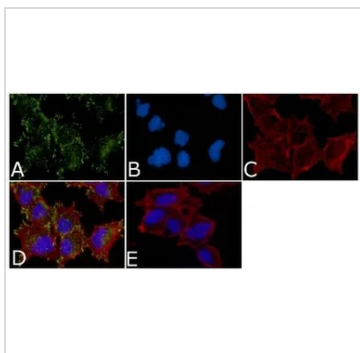
## Note

For laboratory research use only. Not for any clinical, therapeutic, or diagnostic use in humans or animals. Not for animal or human consumption.

Purchasers shall not, and agree not to enable third parties to, analyze, copy, reverse engineer or otherwise attempt to determine the structure or sequence of the product.



For full product information, images and publications, please visit our [website](#).

**DATA IMAGES**

**GTX25635 ICC/IF Image**

ICC/IF analysis of A549 cells using GTX25635 c-Kit (phospho Tyr936) antibody. Panel e is a no primary antibody control.

Green : Primary antibody

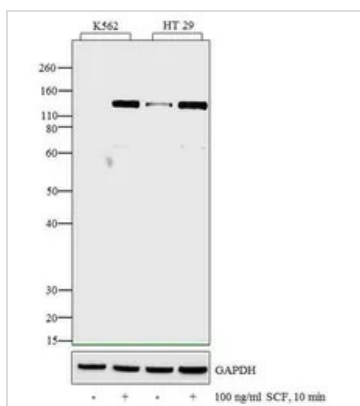
Blue : Nuclei

Red : Actin

Fixation : 4% paraformaldehyde

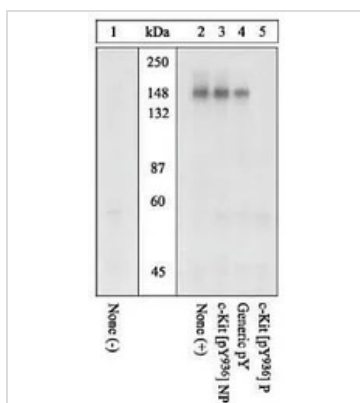
Permeabilization : 0.25% Triton X-100 for 10 minutes

Dilution : 1:250 dilution in 1% BSA incubated for 3 hours at room temperature


**GTX25635 WB Image**

WB analysis of whole cell extracts (30 µg lysate) of K562 (Lane 1) treated for 10 minutes with 100 ng/ml of SCF (Lane 2), HT 29 (Lane 3) treated for 10 minutes with 100 ng/ml of SCF (Lane 4) using GTX25635 c-Kit (phospho Tyr936) antibody.

Dilution : 1:250


**GTX25635 WB Image**

WB analysis of M07e cells left untreated (Lane 1) or treated (Lane 2-5) with SCF using GTX25635 c-Kit (phospho Tyr936) antibody.



For full product information, images and publications, please visit our [website](https://www.genetex.com).