

EGFR (phospho Tyr845) antibody

Cat. No. GTX25636

Host	Rabbit
Clonality	Polyclonal
Isotype	IgG
Applications	WB, ICC/IF, IHC
Reactivity	Human, Mouse, Rat

Package

50 µl

Applications

Application Note

*Optimal dilutions/concentrations should be determined by the researcher.

Suggested dilution	Recommended dilution
WB	Assay dependent
ICC/IF	1:250
IHC	Assay dependent

Not tested in other applications.

Calculated MW 134 kDa. ([Note](#))

Product Note The full-length EGFR includes the 24 aa signal peptide that is cleaved during EGFR maturation. The Tyr845 of mature EGFR is equivalent to Tyr869 of uncleaved EGFR.

Properties

Form	Liquid
Buffer	PBS, 0.1% BSA, 50% Glycerol
Preservative	0.05% Sodium azide
Storage	Store as concentrated solution. Centrifuge briefly prior to opening vial. For short-term storage (1-2 weeks), store at 4°C. For long-term storage, aliquot and store at -20°C or below. Avoid multiple freeze-thaw cycles.
Concentration	Batch dependent (Please refer to the vial label for the specific concentration.)
Immunogen	The antiserum was produced against a chemically synthesized phosphopeptide derived from the region of human EGFR that contains tyrosine 845. The sequence is conserved in mouse and rat.
Purification	Purified by antigen-affinity chromatography
Conjugation	Unconjugated



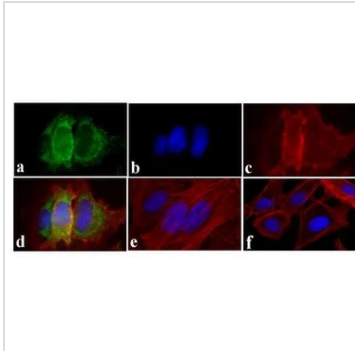
For full product information, images and publications, please visit our [website](#).

For laboratory research use only. Not for any clinical, therapeutic, or diagnostic use in humans or animals. Not for animal or human consumption.

Note

Purchasers shall not, and agree not to enable third parties to, analyze, copy, reverse engineer or otherwise attempt to determine the structure or sequence of the product.

DATA IMAGES



GTXT25636 ICC/IF Image

ICC/IF analysis of HeLa cells treated with EGF (200 ng/mL for 10 min) using GTXT25636 EGFR (phospho Tyr845) antibody. Panel e is untreated cell with no signal. Panel f represents control cells with no primary antibody to assess background.

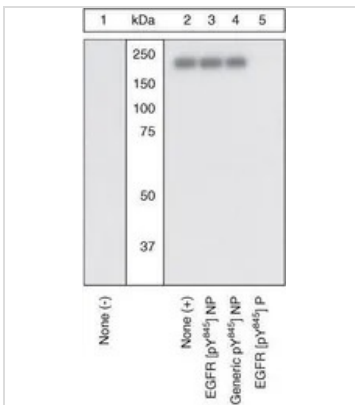
Green : Primary antibody

Blue : Nuclei

Red : Actin

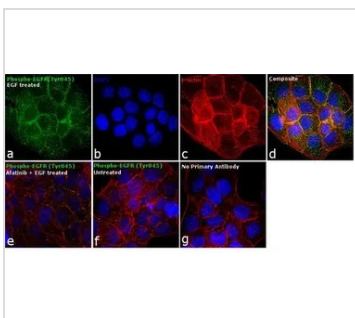
Fixation : 4% paraformaldehyde

Permeabilization : 0.25% Triton X-100 for 10 minutes



GTXT25636 WB Image

WB analysis of samples using GTXT25636 EGFR (phospho Tyr845) antibody. The data show that only the immunogen phosphopeptide blocks the signal, demonstrating the specificity of the antibody.



GTXT25636 ICC/IF Image

ICC/IF analysis of A431 cells treated with 200 ng/ml of EGF for 10 minutes using GTXT25636 EGFR (phospho Tyr845) antibody.

Green : Primary antibody

Blue : Nuclei

Red : Actin

Fixation : 4% paraformaldehyde

Permeabilization : 0.1% Triton X-100 for 10 minutes



For full product information, images and publications, please visit our [website](https://www.genetex.com).