

EGFR (phospho Tyr1068) antibody

Cat. No. GTX25644

Host	Rabbit
Clonality	Polyclonal
Isotype	IgG
Applications	WB, ICC/IF, IHC
Reactivity	Human, Mouse, Rat, Primate

Package
50 µl

Applications

Application Note

*Optimal dilutions/concentrations should be determined by the researcher.

Suggested dilution	Recommended dilution
WB	1:1,000
ICC/IF	1:100
IHC	Assay dependent

Not tested in other applications.

Calculated MW 134 kDa. ([Note](#))

Product Note

The full-length EGFR includes the 24 aa signal peptide that is cleaved during EGFR maturation. The Tyr1068 of mature EGFR is equivalent to Tyr1092 of uncleaved EGFR.

Properties

Form	Liquid
Buffer	PBS, 0.1% BSA, 50% Glycerol
Preservative	0.05% Sodium azide
Storage	Store as concentrated solution. Centrifuge briefly prior to opening vial. For short-term storage (1-2 weeks), store at 4°C. For long-term storage, aliquot and store at -20°C or below. Avoid multiple freeze-thaw cycles.
Concentration	Batch dependent (Please refer to the vial label for the specific concentration.)
Immunogen	The antiserum was produced against a chemically synthesized phosphopeptide derived from the region of human EGFR that contains tyrosine 1068. The sequence is conserved in rat.
Purification	Purified by antigen-affinity chromatography
Conjugation	Unconjugated



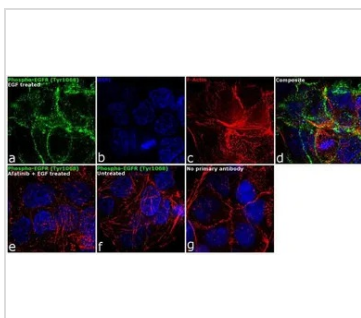
For full product information, images and publications, please visit our [website](#).

For laboratory research use only. Not for any clinical, therapeutic, or diagnostic use in humans or animals. Not for animal or human consumption.

Note

Purchasers shall not, and agree not to enable third parties to, analyze, copy, reverse engineer or otherwise attempt to determine the structure or sequence of the product.

DATA IMAGES



GTX25644 ICC/IF Image

ICC/IF analysis of A431 cells treated with 200 ng/ml of EGF for 10 minutes using GTX25644 EGFR (phospho Tyr1068) antibody.

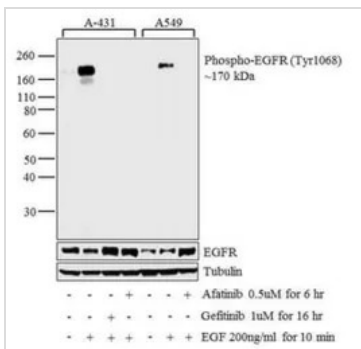
Green : Primary antibody

Blue : Nuclei

Red : Actin

Fixation : 4% paraformaldehyde

Permeabilization : 0.1% Triton X-100 for 10 minutes



GTX25644 WB Image

WB analysis of membrane enriched extracts (30 ug lysate) of A431 (Lane 1) treated with EGF (200ng/ml for 10 minutes) (Lane 2), A431 treated with Gefitinib followed by EGF (1uM for 16 hours, 200ng/ml for 10 minutes) (Lane 3), A431 treated with Afatinib followed by EGF (0.5 uM for 6 hours, 200ng/ml for 10 minutes) (Lane 4), A549 (Lane 5) treated with EGF (200ng/ml for 10 minutes) (Lane 6), and A549 treated with Afatinib followed by EGF (0.5 uM for 6 hours, 200ng/ml for 10 minutes) (Lane 7) using GTX25644 EGFR (phospho Tyr1068) antibody.

Dilution : 1:1000



For full product information, images and publications, please visit our [website](#).