

## EGFR (phospho Tyr1086) antibody

Cat. No. GTX25650

Host	Rabbit
Clonality	Polyclonal
Isotype	IgG
Applications	WB, ICC/IF, IHC
Reactivity	Human, Mouse

Package

50 µl

## Applications

## Application Note

\*Optimal dilutions/concentrations should be determined by the researcher.

Suggested dilution	Recommended dilution
WB	1:1000
ICC/IF	1:100
IHC	Assay dependent

Not tested in other applications.

**Calculated MW** 134 kDa. ([Note](#))

**Product Note** The full-length EGFR includes the 24 aa signal peptide that is cleaved during EGFR maturation. The Tyr1086 of mature EGFR is equivalent to Tyr1110 of uncleaved EGFR.

## Properties

Form	Liquid
Buffer	PBS, 0.1% BSA, 50% Glycerol
Preservative	0.05% Sodium azide
Storage	Store as concentrated solution. Centrifuge briefly prior to opening vial. For short-term storage (1-2 weeks), store at 4°C. For long-term storage, aliquot and store at -20°C or below. Avoid multiple freeze-thaw cycles.
Concentration	Batch dependent (Please refer to the vial label for the specific concentration.)
Immunogen	The antiserum was produced against a chemically synthesized phosphopeptide derived from the region of human EGFR that contains tyrosine 1086. The sequence is conserved in mouse and rat.
Purification	Purified by antigen-affinity chromatography
Conjugation	Unconjugated



For full product information, images and publications, please visit our [website](#).

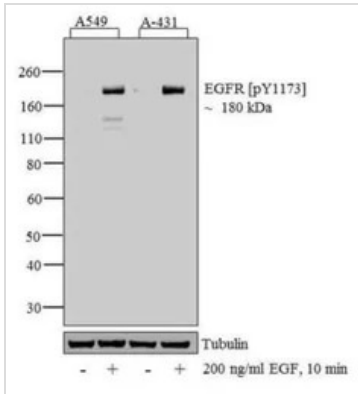
Date 2025 / 12 / 27 Page 1 of 2

For laboratory research use only. Not for any clinical, therapeutic, or diagnostic use in humans or animals. Not for animal or human consumption.

#### Note

Purchasers shall not, and agree not to enable third parties to, analyze, copy, reverse engineer or otherwise attempt to determine the structure or sequence of the product.

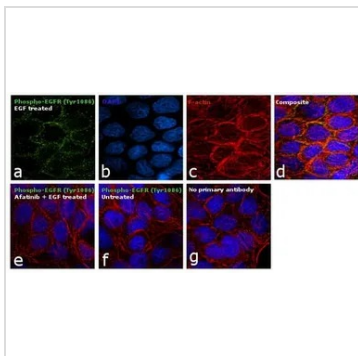
#### DATA IMAGES



#### GTX25650 WB Image

WB analysis of 30 µg of A549 (Lane 1) treated for 10 minutes with 200 ng/ml of EGF (Lane 2), A431 (Lane 3) treated for 10 minutes with 200 ng/ml of EGF (Lane 4) cell lysate using GTX25650 EGFR (phospho Tyr1086) antibody.

Dilution : 1:1000



#### GTX25650 ICC/IF Image

ICC/IF analysis of A431 cells treated with Afatinib (1µM for 6hrs) followed by EGF (200ng/ml for 10 minutes) using GTX25650 EGFR (phospho Tyr1086) antibody.

Green : Primary antibody

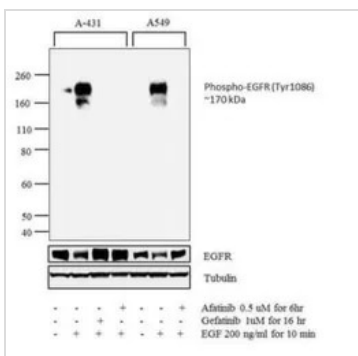
Blue : Nuclei

Red : Actin

Fixation : 4% paraformaldehyde

Permeabilization : 0.1% Triton X-100 for 15 minutes

Dilution : 1:100 in 0.1% BSA incubated at 4°C



#### GTX25650 WB Image

WB analysis of membrane enriched extracts (30 ug lysate) of A-431 (Lane 1) treated with EGF (200ng/ml for 10 minutes) (Lane 2), A-431 treated with Gefitinib followed by EGF (1uM for 16 hours, 200ng/ml for 10 minutes) (Lane 3), A-431 treated with Afatinib followed by EGF (0.5 uM for 6 hours, 200ng/ml for 10 minutes) (Lane 4), A549 (Lane 5) treated with EGF (200ng/ml for 10 minutes) (Lane 6), and A549 treated with Afatinib followed by EGF (0.5 uM for 6 hours, 200ng/ml for 10 minutes) (Lane 7) using GTX25650 EGFR (phospho Tyr1086) antibody.

Dilution : 1:1000



For full product information, images and publications, please visit our [website](https://www.genetex.com).