

EGFR (phospho Tyr1173) antibody

Cat. No. GTX25652

Host	Rabbit
Clonality	Polyclonal
Isotype	IgG
Applications	WB, ICC/IF, IHC-P, FCM, ELISA, IHC
Reactivity	Human, Mouse, Rat

Package

50 µl

Applications

Application Note

*Optimal dilutions/concentrations should be determined by the researcher.

Suggested dilution	Recommended dilution
WB	Assay dependent
ICC/IF	1:100-1:500
IHC-P	1:10-1:100
FCM	1:20
ELISA	Assay dependent
IHC	Assay dependent

Not tested in other applications.

Calculated MW 134 kDa. ([Note](#))

Product Note The full-length EGFR includes the 24 aa signal peptide that is cleaved during EGFR maturation. The Tyr1173 of mature EGFR is equivalent to Tyr1197 of uncleaved EGFR.

Properties

Form	Liquid
Buffer	PBS, 0.1% BSA, 50% Glycerol
Preservative	0.05% Sodium azide
Storage	Store as concentrated solution. Centrifuge briefly prior to opening vial. For short-term storage (1-2 weeks), store at 4°C. For long-term storage, aliquot and store at -20°C or below. Avoid multiple freeze-thaw cycles.
Concentration	Batch dependent (Please refer to the vial label for the specific concentration.)
Immunogen	The antiserum was produced against a chemically synthesized phosphopeptide derived from the region of human EGFR that contains tyrosine 1173. The sequence is conserved in mouse and rat.
Purification	Purified by antigen-affinity chromatography



For full product information, images and publications, please visit our [website](#).

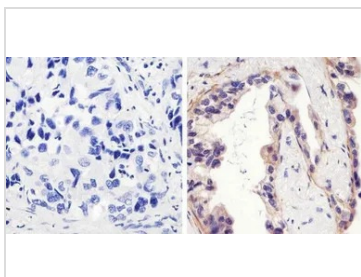
Conjugation

Unconjugated

Note

For laboratory research use only. Not for any clinical, therapeutic, or diagnostic use in humans or animals. Not for animal or human consumption.

Purchasers shall not, and agree not to enable third parties to, analyze, copy, reverse engineer or otherwise attempt to determine the structure or sequence of the product.

DATA IMAGES

GTX25652 IHC-P Image

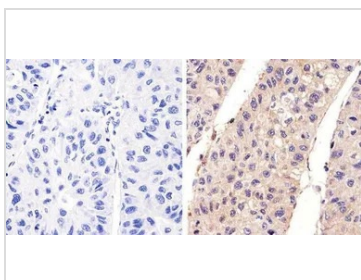
IHC-P analysis of human lung adenocarcinoma tissue using GTX25652 EGFR (phospho Tyr1173) antibody.

Right : Primary antibody

Left : Negative control without primary antibody

Antigen retrieval : 10mM sodium citrate (pH 6.0), microwaved for 8-15 min

Dilution : 1:50


GTX25652 IHC-P Image

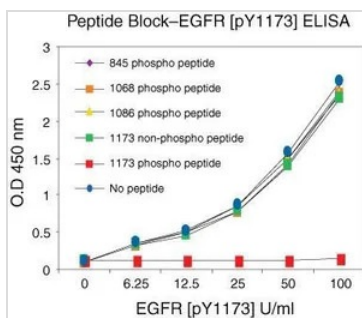
IHC-P analysis of human hepatocellular carcinoma tissue using GTX25652 EGFR (phospho Tyr1173) antibody.

Right : Primary antibody

Left : Negative control without primary antibody

Antigen retrieval : 10mM sodium citrate (pH 6.0), microwaved for 8-15 min

Dilution : 1:20


GTX25652 ELISA Image

ELISA analysis of phospho-EGFR(Tyr1173) using GTX25652 EGFR (phospho Tyr1173) antibody. The antibody was blocked with different phospho-EGFR peptides.


 For full product information, images and publications, please visit our [website](https://www.genetex.com).