

Her2 / ErbB2 (phospho Tyr1248) antibody

Cat. No. GTX25654

Host	Rabbit
Clonality	Polyclonal
Isotype	IgG
Applications	WB
Reactivity	Human, Rat, Dog, Hamster

References (1)

Package

50 µl

Applications

Application Note

*Optimal dilutions/concentrations should be determined by the researcher.

Suggested dilution	Recommended dilution
WB	Assay dependent
Not tested in other applications.	

Calculated MW 138 kDa. ([Note](#))

Properties

Form	Liquid
Buffer	PBS, 0.1% BSA
Preservative	0.05% Sodium azide
Storage	Store as concentrated solution. Centrifuge briefly prior to opening vial. For short-term storage (1-2 weeks), store at 4°C. For long-term storage, aliquot and store at -20°C or below. Avoid multiple freeze-thaw cycles.
Concentration	0.5 mg/ml (Please refer to the vial label for the specific concentration.)
Immunogen	Synthetic phosphopeptide derived from a region of human ErbB-2 that contains tyrosine 1248.
Purification	Immunogen affinity purified The antibody has been negatively preadsorbed using a non-phosphopeptide corresponding to the site of phosphorylation to remove antibody that is reactive with non-phosphorylated ErbB2. The final product is generated by affinity chromatography using an ErbB
Conjugation	Unconjugated

Note

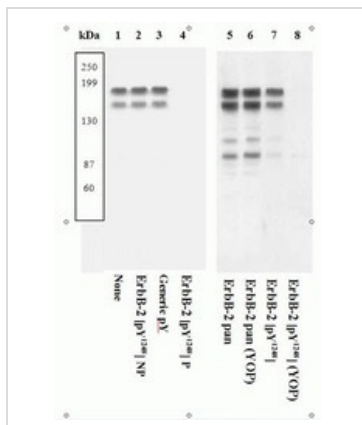
For laboratory research use only. Not for any clinical, therapeutic, or diagnostic use in humans or animals. Not for animal or human consumption.

Purchasers shall not, and agree not to enable third parties to, analyze, copy, reverse engineer or otherwise attempt to determine the structure or sequence of the product.



For full product information, images and publications, please visit our [website](#).

DATA IMAGES



GTx25654 WB Image

Extracts of SK-BR-3 cells were resolved by SDS-PAGE on a 10% Tris-glycine gel and transferred to PVDF. The membrane was either not treated (1-5, 7) or treated (6, 8) with YOP phosphatase, blocked with a 5% BSA-TBST buffer overnight at 4°C, then incubated with the ErbB-2 [pY1248] antibody for two hours at room temperature in a 3% BSA-TBST buffer, following prior incubation with: no peptide (1, 5-8), the non-phosphopeptide corresponding to the phosphopeptide immunogen (2), a generic phosphotyrosine-containing peptide (3), or the phosphopeptide immunogen (4). After washing, the membrane was incubated with goat F(ab)2 anti-rabbit IgG alkaline phosphatase and signals were detected. The data show that only the phosphopeptide corresponding to ErbB-2 [pY1248] blocks the antibody signal, demonstrating the specificity of the antibody. The data also show that phosphatase stripping eliminates the signal, further verifying that the antibody is phospho-specific.



For full product information, images and publications, please visit our [website](https://www.genetex.com).